

Recombinant Human GLIS2 protein, His-tagged

Cat. No. GLIS2-295H **Lot. No.** (See product label)

SPECIFICATION

Product Overview	Recombinant Human GLIS2 protein(315-524 aa), fused with N-terminal His tag, was expressed in E. coli.
Species	Human
Source	E.coli
ProteinLength	315-524 aa
Form	The purified protein was Lyophilized from sterile PBS (58mM Na ₂ HPO ₄ , 17mM NaH ₂ PO ₄ , 68mM NaCl, pH7.4). 5 % trehalose and 5 % mannitol are added as protectant before lyophilization.
Storage	Short-term storage: Store at 2-8°C for (1-2 weeks). Long-term storage: Aliquot and store at -20°C to -80°C for up to 3 months, reconstitution with sterile water and addition of an equal volume of glycerol. Avoid repeat freeze-thaw cycles.
Purity	85%, by SDS-PAGE with Coomassie Brilliant Blue staining.

GENE INFORMATION

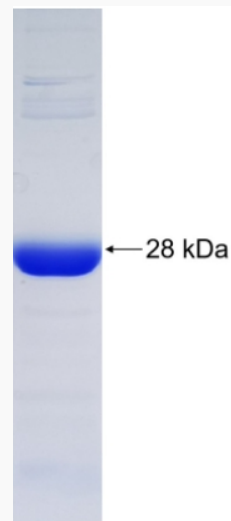
Official Symbol	GLIS2
Synonyms	GLIS2; GLIS family zinc finger 2; zinc finger protein GLIS2; nephrocystin 7; NPHP7; GLI-similar 2; nephrocystin-7; GLI-similar protein 2; neuronal Krueppel-like protein;

 Tel: 1-631-559-9269 1-516-512-3133

 Email: info@creative-biomart.com  Fax: 1-631-938-8127

 45-1 Ramsey Road, Shirley, NY 11967, USA

Kruppel-like zinc finger protein GLIS2; NKL; FLJ38247;

Gene ID 84662**mRNA Refseq** NM_032575**Protein Refseq** NP_115964**MIM** 608539**UniProt ID** Q9BZE0**SDS-PAGE** Tel: 1-631-559-9269 1-516-512-3133 Email: info@creative-biomart.com  Fax: 1-631-938-8127 45-1 Ramsey Road, Shirley, NY 11967, USA