

Recombinant Human GLMN Protein, GST-tagged

Cat. No. GLMN-4965H Lot. No. (See product label)

SPECIFICATION

Product Overview Human GLMN full-length ORF (AAH01257, 1 a.a. - 594 a.a.) recombinant protein with GST-tag at N-terminal.

Species Human

Source Wheat Germ

Description This gene encodes a phosphorylated protein that is a member of a Skp1-Cullin-F-box-like complex. The protein is essential for normal development of the vasculature and mutations in this gene have been associated with glomovenous malformations, also called glomangiomas. Alternatively spliced variants that encode different protein isoforms have been described but the full-length nature of only one has been determined. [provided by RefSeq]

Molecular Mass 91.08 kDa

AA Sequence

```

MAVEELQSIKRCQILEEQDFKEEDFGLFQLAGQRCIEEGHTDQLEIIQNEKNKVIKN
MGWNLVGPVVRCLLCKDKEDSKRKVYFLIFDLLVKLCNPKELLGLLELIEPSGKQI
SQSILLLLQPLQTVIQKLHNKAYSIGLALSTLWNQLSLLPVPYSKEQIQMDDYGLCQC
CKALIEFTKPFVEEVIDNKENSLENEKLDKDELLKFCFKSLKCPLLTAQFFEQSEEGN
DPFRYFASEIIGFLSAIGHPPFKMIFNHGRKKRTWNYLEFEEEEENKQLADSMASLAYL
VFVQGIHIDQLPMVLSPLYLLQFNMGHIEVFLQRTEESVISKGLELLENSLLRIEDNSLL
YQYLEIKSFLTVPQGLVKVMTLCPIETLRKKS LAMLQLYINKLDSQGKYTLFRCLLNTS
NHSGVEAFIIQNIKNQIDMSLKRTRNNKWFTGPQLISLLDLVFLPEGAETDLLQNSD

```

 Tel: 1-631-559-9269 1-516-512-3133

 Email: info@creative-biomart.com  Fax: 1-631-938-8127

 45-1 Ramsey Road, Shirley, NY 11967, USA



RIMASLNLLRYLVIKDNENDNQTGLWTELGNIENNFLKPLHIGLNMSKAHYEAEIKNS
QEAQKSKDLCISITVSGEEIPNMPPEMQLKVLHSALFTFDLIESVRLARVEELIEIKTKST
SEENIGIK

Applications	Enzyme-linked Immunoabsorbent Assay Western Blot (Recombinant protein) Antibody Production Protein Array
Notes	Best use within three months from the date of receipt of this protein.
Storage	Store at -80 centigrade. Aliquot to avoid repeated freezing and thawing.
Storage Buffer	50 mM Tris-HCl, 10 mM reduced Glutathione, pH=8.0 in the elution buffer.

GENE INFORMATION

Gene Name	GLMN glomulin, FKBP associated protein [Homo sapiens]
Official Symbol	GLMN
Synonyms	GLMN; glomulin, FKBP associated protein; venous malformation with glomus cells, VMGLOM; glomulin; FAP48; FKBPAP; GLML; GVM; FKBP-associated protein; FK506-binding protein-associated protein; FAP; FAP68; VMGLOM;
Gene ID	11146
mRNA Refseq	NM_053274
Protein Refseq	NP_444504

Tel: 1-631-559-9269 1-516-512-3133

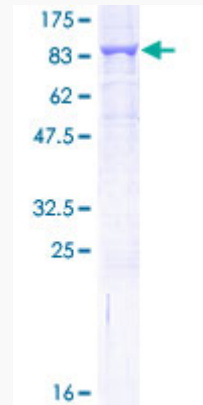
Email: info@creative-biomart.com Fax: 1-631-938-8127

45-1 Ramsey Road, Shirley, NY 11967, USA

MIM 601749

UniProt ID Q92990

**Quality Control
Testing**



12.5% SDS-PAGE Stained with Coomassie Blue.

 Tel: 1-631-559-9269 1-516-512-3133

 Email: info@creative-biomart.com  Fax: 1-631-938-8127

 45-1 Ramsey Road, Shirley, NY 11967, USA