

Recombinant Human GLMN Protein, Myc/DDK-tagged, C13 and N15-labeled

Cat. No. GLMN-5740H Lot. No. (See product label)

SPECIFICATION

Product Overview

GLMN MS Standard C13 and N15-labeled recombinant protein (NP_444504) with a C-terminal MYC/DDK tag, was expressed in HEK293 cells.

Species

Human

Source

HEK293

Description

This gene encodes a phosphorylated protein that is a member of a Skp1-Cullin-F-box-like complex. The protein is essential for normal development of the vasculature and mutations in this gene have been associated with glomuvenous malformations, also called glomangiomas. Multiple splice variants encoding different isoforms have been found for this gene.

Molecular Mass

68.2 kDa

AA Sequence

MAVEELQSIKRCQILEEQDFKEEDFGLFQLAGQRCIEEGHTDQLEIIQNEKNKVIKN
 MGWNLVGPVVRCLLCKDKEDSKRKVYFLIFDLLVKLCNPKELLGLLELIEEPSGKQI
 SQSILLLLQPLQTVIQKLHNKAYSIGLALSTLWNQLSLLPVPYSKEQIQMDDYGLCQC
 CKALIEFTKPFVEEVIDNKENSLENEKLDKDELLKFCFKSLKCPLLTAQFFEQSEEGGN
 DPFYFASEIIGFLSAIGHPPFKMIFNHGRKKRTWNYLEFEEEEENKQLADSMASLAYL
 VVQGIHIDQLPMVLSPLYLLQFNMGHIEVFLQRTEESVISKGLELLENSLLRIEDNSLL
 YQYLEIKSFLTVPQGLVKVMTLCPIETLRKKSAMLQLYINKLDSQGKYTLFRCLLNTS
 NHSGVEAFIIQNIKNQIDMSLKRTRNNKWFTGPQLISLLDLVFLPEGAETDLLQNSD

 Tel: 1-631-559-9269 1-516-512-3133

 Email: info@creative-biomart.com  Fax: 1-631-938-8127

 45-1 Ramsey Road, Shirley, NY 11967, USA

RIMASLNLLRYLVIKDNENDNQTGLWTELGNIENNFLKPLHIGLNMSKAHYEAEIKNS
 QEAQSKDLCSITVSGEEIPNMPPEMQLKVLHSALFTFDLIESVRLARVEELIEIKTKST
 SEENIGIKTRTRPLEQKLISEEDLAANDILDYKDDDDKV

Purity > 80% as determined by SDS-PAGE and Coomassie blue staining

Stability Stable for 3 months from receipt of products under proper storage and handling conditions.

Storage Store at -80 centigrade. Avoid repeated freeze-thaw cycles.

Concentration 50 µg/mL as determined by BCA

Storage Buffer 100 mM glycine, 25 mM Tris-HCl, pH 7.3.

GENE INFORMATION

Gene Name [GLMN glomulin, FKBP associated protein \[Homo sapiens \(human\) \]](#)

Official Symbol [GLMN](#)

Synonyms GLMN; glomulin, FKBP associated protein; venous malformation with glomus cells, VMGLOM; glomulin; FAP48; FKBPAP; GLML; GVM; FKBP-associated protein; FK506-binding protein-associated protein; FAP; FAP68; VMGLOM;

Gene ID [11146](#)

mRNA Refseq [NM_053274](#)

Protein Refseq [NP_444504](#)

 Tel: 1-631-559-9269 1-516-512-3133

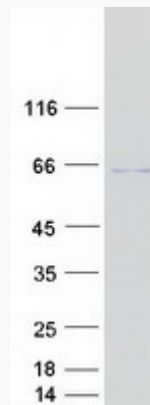
 Email: info@creative-biomart.com  Fax: 1-631-938-8127

 45-1 Ramsey Road, Shirley, NY 11967, USA

MIM 601749

UniProt ID Q92990

SDS-PAGE



 Tel: 1-631-559-9269 1-516-512-3133

 Email: info@creative-biomart.com  Fax: 1-631-938-8127

 45-1 Ramsey Road, Shirley, NY 11967, USA