

Recombinant Full Length Human GLO1 Protein, C-Flag-tagged

Cat. No. GLO1-1412HFL Lot. No. (See product label)

SPECIFICATION

| | |
|-------------------------|--|
| Product Overview | Recombinant Full Length Human GLO1 Protein, fused to Flag-tag at C-terminus, was expressed in Mammalian cells. |
| Species | Human |
| Source | Mammalian Cells |
| Description | The enzyme encoded by this gene is responsible for the catalysis and formation of S-lactoyl-glutathione from methylglyoxal condensation and reduced glutathione. Glyoxalase I is linked to HLA and is localized to 6p21.3-p21.1, between HLA and the centromere. |
| Form | 25 mM Tris HCl, pH 7.3, 100 mM glycine, 10% glycerol. |
| Molecular Mass | 20.6 kDa |
| AA Sequence | MAEPQPPSGGLTDEAALSYSADADPSTKDFLLQQTMLRVKDPKSLDFYTRVLGMT LIQKCDFPIMKFSL YFLAYEDKNDIPKEKDEKIAWALSRKATLELTHNWGTEDDETQS YHNGNSDPRGFGHIGIAVPDVYSACK RFEELGVKFKVKKPDDGKMKGLAFIQDPDGYWIEILNPNKMATLMTRTRPLEQKLISE EDLAANDILDYKDDDDKV |
| Purity | > 80% as determined by SDS-PAGE and Coomassie blue staining. |
| Stability | Stable for 12 months from the date of receipt of the product under proper storage and |

 Tel: 1-631-559-9269 1-516-512-3133

 Email: info@creative-biomart.com  Fax: 1-631-938-8127

 45-1 Ramsey Road, Shirley, NY 11967, USA



| | |
|-------------------------|--|
| | handling conditions. Avoid repeated freeze-thaw cycles. |
| Storage | Store at -80 centigrade. |
| Concentration | >50 ug/mL as determined by microplate BCA method. |
| Preparation | Recombinant protein was captured through anti-DDK affinity column followed by conventional chromatography steps. |
| Protein Pathways | Pyruvate metabolism |
| Full Length | Full L. |

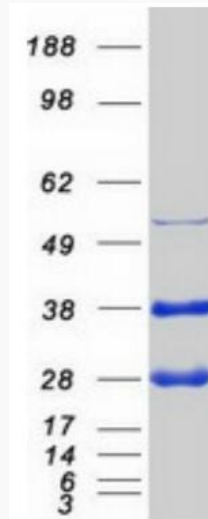
GENE INFORMATION

| | |
|------------------------|--|
| Gene Name | GLO1 glyoxalase I [Homo sapiens (human)] |
| Official Symbol | GLO1 |
| Synonyms | GLYI; GLOD1; HEL-S-74 |
| Gene ID | 2739 |
| mRNA Refseq | NM_006708.3 |
| Protein Refseq | NP_006699.2 |
| MIM | 138750 |
| UniProt ID | Q04760 |

Tel: 1-631-559-9269 1-516-512-3133

Email: info@creative-biomart.com Fax: 1-631-938-8127

45-1 Ramsey Road, Shirley, NY 11967, USA



Coomassie blue staining of purified GLO1 protein.

 Tel: 1-631-559-9269 1-516-512-3133

 Email: info@creative-biomart.com  Fax: 1-631-938-8127

 45-1 Ramsey Road, Shirley, NY 11967, USA