

Recombinant Human GLO1 Protein, Myc/DDK-tagged, C13 and N15-labeled

Cat. No. GLO1-4020H **Lot. No.** (See product label)

SPECIFICATION

Product Overview	GLO1 MS Standard C13 and N15-labeled recombinant protein (NP_006699) with a C-terminal MYC/DDK tag, was expressed in HEK293 cells.
Species	Human
Source	HEK293
Description	The enzyme encoded by this gene is responsible for the catalysis and formation of S-lactoyl-glutathione from methylglyoxal condensation and reduced glutathione. Glyoxalase I is linked to HLA and is localized to 6p21.3-p21.1, between HLA and the centromere.
Molecular Mass	20.8 kDa
AA Sequence	MAEPQPPSGGLTDEAALSYSADPSTKDFLLQQTMLRVKDPKKSDFYTRVLGMT LIQKCDFPIMKFSLYFLAYEDKNDIPKEKDEKIAWALSRKATLELTHNWGTEDDETQS YHNGNSDPRGFGHIGIAVPDVYSACKRFEELGVKFKVKKPDDGKMKGLAFIQDPDG WIEILNPNKMATLMTRTRPLEQKLISEEDLAANDILDYKDDDDKV
Purity	> 80% as determined by SDS-PAGE and Coomassie blue staining
Stability	Stable for 3 months from receipt of products under proper storage and handling conditions.

 Tel: 1-631-559-9269 1-516-512-3133

 Email: info@creative-biomart.com  Fax: 1-631-938-8127

 45-1 Ramsey Road, Shirley, NY 11967, USA

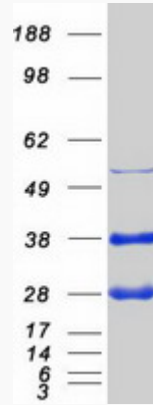
Storage	Store at -80 centigrade. Avoid repeated freeze-thaw cycles.
Concentration	50 µg/mL as determined by BCA
Storage Buffer	100 mM glycine, 25 mM Tris-HCl, pH 7.3.
GENE INFORMATION	
Gene Name	GLO1 glyoxalase I [Homo sapiens (human)]
Official Symbol	GLO1
Synonyms	GLO1; glyoxalase I; lactoylglutathione lyase; GLOD1; glyoxalase domain containing 1; glx I; aldoketomutase; methylglyoxalase; ketone-aldehyde mutase; lactoyl glutathione lyase; S-D-lactoylglutathione methylglyoxal lyase; GLYI;
Gene ID	2739
mRNA Refseq	NM_006708
Protein Refseq	NP_006699
MIM	138750
UniProt ID	Q04760

 Tel: 1-631-559-9269 1-516-512-3133

 Email: info@creative-biomart.com  Fax: 1-631-938-8127

 45-1 Ramsey Road, Shirley, NY 11967, USA

SDS-PAGE



 Tel: 1-631-559-9269 1-516-512-3133

 Email: info@creative-biomart.com  Fax: 1-631-938-8127

 45-1 Ramsey Road, Shirley, NY 11967, USA