

## Recombinant Human GLO1 protein, His-tagged

Cat. No. GLO1-4698H Lot. No. (See product label)

### SPECIFICATION

<b>Product Overview</b>	Recombinant Human GLO1 protein(Q04760)(199aa), fused with N-terminal His tag, was expressed in E. coli.
<b>Species</b>	Human
<b>Source</b>	E.coli
<b>Protein Length</b>	199aa(including fusion tag)
<b>Tag</b>	N-His
<b>Form</b>	20mM Tris.Cl, 50mM NaCl, 50% Glycerol, pH8.0.
<b>Molecular Mass</b>	22.7kDa(including fusion tag)
<b>Storage</b>	Store at -80°C and avoid repeated freeze-thaw cycles.
<b>Reconstitution</b>	It is recommended that sterile water be added to the vial to prepare a stock solution of 0.2 ug/ul. Centrifuge the vial at 4°C before opening to recover the entire contents.

### GENE INFORMATION

<b>Gene Name</b>	GLO1 glyoxalase I [ Homo sapiens ]
<b>Official Symbol</b>	GLO1

 Tel: 1-631-559-9269 1-516-512-3133

 Email: [info@creative-biomart.com](mailto:info@creative-biomart.com)  Fax: 1-631-938-8127

 45-1 Ramsey Road, Shirley, NY 11967, USA

**Synonyms** GLO1; glyoxalase I; lactoylglutathione lyase; GLOD1; glyoxalase domain containing 1; glx I; aldoketomutase; methylglyoxalase; ketone-aldehyde mutase; lactoyl glutathione lyase; S-D-lactoylglutathione methylglyoxal lyase; GLYI;

**Gene ID** 2739

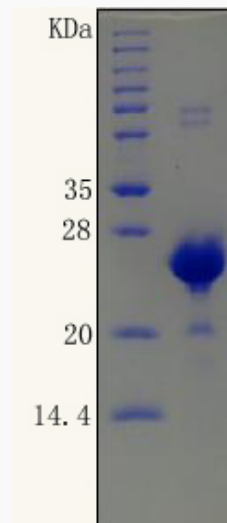
**mRNA Refseq** NM\_006708

**Protein Refseq** NP\_006699

**MIM** 138750

**UniProt ID** Q04760

**SDS-PAGE**



 Tel: 1-631-559-9269 1-516-512-3133

 Email: [info@creative-biomart.com](mailto:info@creative-biomart.com)  Fax: 1-631-938-8127

 45-1 Ramsey Road, Shirley, NY 11967, USA