

Recombinant Human GLOD4 Protein, GST-tagged

Cat. No. GLOD4-4968H Lot. No. (See product label)

SPECIFICATION

Product Overview	Human GLOD4 full-length ORF (AAH15848.1, 1 a.a. - 298 a.a.) recombinant protein with GST-tag at N-terminal.
Species	Human
Source	Wheat Germ
Description	GLOD4 (Glyoxalase Domain Containing 4) is a Protein Coding gene. Diseases associated with GLOD4 include Hepatocellular Carcinoma.
Molecular Mass	59.6 kDa
AA Sequence	<p>MAARRALHFVFKVGNRFQTARFYRDVLGMKVLRHEEFEEGCKAACNGPYDGKWS KTMVGFPGPEDDHFVAELTYNYGVGDYKLGNDFMGITLASSQAVSNARKLEWPLTEV AEGVFETEAPGGYKLYLQNRSLPQSDPVLKVTLAVSDLQKSLNYWCNLLGMKIYEK DEEKQRALLGYADNQCKLELQGVKGGVDHAAAFGRIAFSCPQKELPDLEDLMKREN QKILTPLVSLDTPGKATVQVVILADPDGHEICFVGDEAFRELSKIDPEGSKLLDDAMA ADKSDEWFAKHNKPKASG</p>
Applications	<p>Enzyme-linked Immunoabsorbent Assay Western Blot (Recombinant protein) Antibody Production Protein Array</p>
Notes	Best use within three months from the date of receipt of this protein.

 Tel: 1-631-559-9269 1-516-512-3133

 Email: info@creative-biomart.com  Fax: 1-631-938-8127

 45-1 Ramsey Road, Shirley, NY 11967, USA

Storage Store at -80 centigrade. Aliquot to avoid repeated freezing and thawing.

Storage Buffer 50 mM Tris-HCl, 10 mM reduced Glutathione, pH=8.0 in the elution buffer.

GENE INFORMATION

Gene Name GLOD4 glyoxalase domain containing 4 [Homo sapiens]

Official Symbol GLOD4

Synonyms GLOD4; glyoxalase domain containing 4; C17orf25, chromosome 17 open reading frame 25; glyoxalase domain-containing protein 4; CGI 150; HC71; CGI-150; C17orf25;

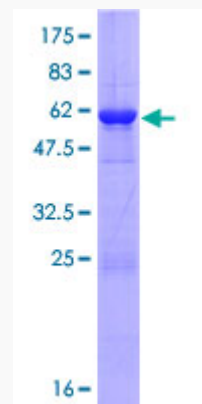
Gene ID 51031

mRNA Refseq NM_016080

Protein Refseq NP_057164

UniProt ID Q9HC38

Quality Control Testing



 Tel: 1-631-559-9269 1-516-512-3133

 Email: info@creative-biomart.com  Fax: 1-631-938-8127

 45-1 Ramsey Road, Shirley, NY 11967, USA



12.5% SDS-PAGE Stained with Coomassie Blue.

 Tel: 1-631-559-9269 1-516-512-3133

 Email: info@creative-biomart.com  Fax: 1-631-938-8127

 45-1 Ramsey Road, Shirley, NY 11967, USA