

# Recombinant Full Length Human GLOD5 Protein, C-Flag-tagged

**Cat. No.** GLOD5-1161HFL    **Lot. No.** (See product label)

## SPECIFICATION

<b>Product Overview</b>	Recombinant Full Length Human GLOD5 Protein, fused to Flag-tag at C-terminus, was expressed in Mammalian cells.
<b>Species</b>	Human
<b>Source</b>	Mammalian Cells
<b>Description</b>	This gene encodes a protein with a glyoxalase domain.
<b>Form</b>	25 mM Tris HCl, pH 7.3, 100 mM glycine, 10% glycerol.
<b>Molecular Mass</b>	18.1 kDa
<b>AA Sequence</b>	MLRHLP SRLP VKMWGRTLEKQSWRDSSQTPPPCLIRRLDHIVMTVKS IKD TTFYS KILGMEVMTFKEDR KALCFGDQKFNLHEVGKEFEPKAAHPVPGSLDICLITEVPLEE MIQHLKACDVPIEEGPVPR TGAKGPIM SIYFRDPDRNLIEVSNYISSRTRTRPLEQKLISEEDLAANDILDYKDDDDKV
<b>Purity</b>	> 80% as determined by SDS-PAGE and Coomassie blue staining.
<b>Stability</b>	Stable for 12 months from the date of receipt of the product under proper storage and handling conditions. Avoid repeated freeze-thaw cycles.
<b>Storage</b>	Store at -80 centigrade.

 Tel: 1-631-559-9269    1-516-512-3133

 Email: [info@creative-biomart.com](mailto:info@creative-biomart.com)     Fax: 1-631-938-8127

 45-1 Ramsey Road, Shirley, NY 11967, USA

**Concentration** >50 ug/mL as determined by microplate BCA method.

**Preparation** Recombinant protein was captured through anti-DDK affinity column followed by conventional chromatography steps.

**Full Length** Full L.

## GENE INFORMATION

**Gene Name** GLOD5 glyoxalase domain containing 5 [ Homo sapiens (human) ]

**Official Symbol** GLOD5

**Synonyms** glyoxalase domain containing 5

**Gene ID** 392465

**mRNA Refseq** NM\_001080489.3

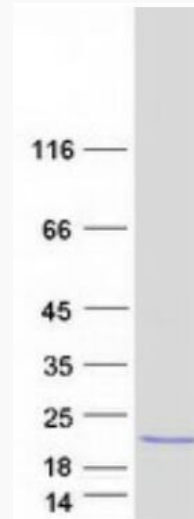
**Protein Refseq** NP\_001073958.2

**UniProt ID** A6NK44

 Tel: 1-631-559-9269 1-516-512-3133

 Email: [info@creative-biomart.com](mailto:info@creative-biomart.com)  Fax: 1-631-938-8127

 45-1 Ramsey Road, Shirley, NY 11967, USA



Coomassie blue staining of purified GLOD5 protein.

 Tel: 1-631-559-9269 1-516-512-3133

 Email: [info@creative-biomart.com](mailto:info@creative-biomart.com)  Fax: 1-631-938-8127

 45-1 Ramsey Road, Shirley, NY 11967, USA