

Active Recombinant Human GLP1R Full Length Transmembrane protein(Nanodisc)

Cat. No. GLP1R-1932H Lot. No. (See product label)

SPECIFICATION

Product Overview	Recombinant Human GLP1R Full Length Transmembrane protein(P43220), was expressed in HEK293.
Species	Human
Source	HEK293
Form	Lyophilized from nanodisc solubilization buffer (20 mM Tris-HCl, 150 mM NaCl, pH 8.0). Normally 5% – 8% trehalose is added as protectants before lyophilization. Please see Certificate of Analysis for specific instructions.
Bio-activity	Elisa plates were pre-coated with Flag Tag GLP1R-Nanodisc (0.2µg/per well). Serial diluted anti-Flag monoclonal antibody solutions were added, washed, and incubated with secondary antibody before Elisa reading. From above data, the EC50 for anti-Flag monoclonal antibody binding with GLP1R-Nanodisc is 3.549ng/ml.
Molecular Mass	The human full length GLP1R protein has a MW of 53.0 kDa.
Storage	Store at -20°C to -80°C for 12 months in lyophilized form. After reconstitution, if not intended for use within a month, aliquot and store at -80°C (Avoid repeated freezing and thawing). Lyophilized proteins are shipped at ambient temperature.
Reconstitution	It is recommended that sterile water be added to the vial to prepare a stock solution of 0.2 ug/ul. Centrifuge the vial at 4°C before opening to recover the entire contents.

 Tel: 1-631-559-9269 1-516-512-3133

 Email: info@creative-biomart.com  Fax: 1-631-938-8127

 45-1 Ramsey Road, Shirley, NY 11967, USA

Full Length Full L.

GENE INFORMATION

Gene Name GLP1R glucagon-like peptide 1 receptor [Homo sapiens]

Official Symbol GLP1R

Synonyms GLP1R; glucagon-like peptide 1 receptor; GLP-1R; GLP-1-R; GLP-1 receptor; MGC138331;

Gene ID 2740

mRNA Refseq NM_002062

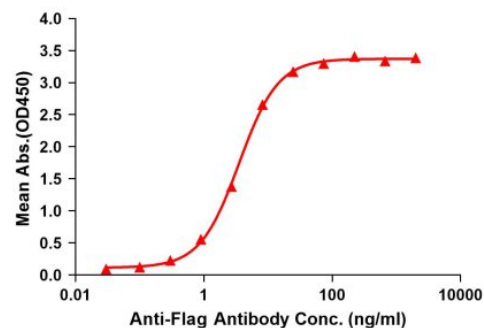
Protein Refseq NP_002053

MIM 138032

UniProt ID P43220

Activity

ELISA assay to evaluate GLP1R-Nanodisc
0.2µg Human GLP1R-Nanodisc per well

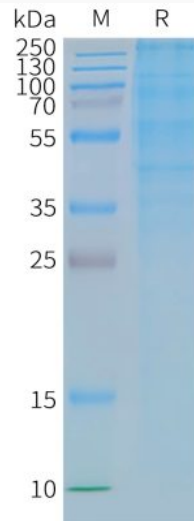


Tel: 1-631-559-9269 1-516-512-3133

Email: info@creative-biomart.com Fax: 1-631-938-8127

45-1 Ramsey Road, Shirley, NY 11967, USA

SDS-PAGE



 Tel: 1-631-559-9269 1-516-512-3133

 Email: info@creative-biomart.com  Fax: 1-631-938-8127

 45-1 Ramsey Road, Shirley, NY 11967, USA