

Recombinant Rat GLP1R Protein (22-135 aa), His-tagged

Cat. No. GLP1R-2107R Lot. No. (See product label)

SPECIFICATION

Product Overview	Recombinant Rat GLP1R Protein (22-135 aa) is produced by Yeast expression system. This protein is fused with a 6xHis tag at the N-terminal. Protein Description: Partial.
Species	Rat
Source	Yeast
ProteinLength	22-135 aa
Description	G-protein coupled receptor for glucagon-like peptide 1 (GLP-1). Ligand binding triggers activation of a signaling cascade that leads to the activation of adenylyl cyclase and increased intracellular cAMP levels. Plays a role in regulating insulin secretion in response to GLP-1.
Form	Tris-based buffer,50% glycerol
Molecular Mass	15.1 kDa
AA Sequence	GPRPQGATVSLSETVQKWREYRHQCQRFLTEAPLLATGLFCNRTFDDYACWPDGPPGSFVNVSCPWYLPWASSVLQGHVYRFCTAEGIWLHKDNSSLPWRDLSECEESKQGERN
Purity	> 90% as determined by SDS-PAGE.

 Tel: 1-631-559-9269 1-516-512-3133

 Email: info@creative-biomart.com  Fax: 1-631-938-8127

 45-1 Ramsey Road, Shirley, NY 11967, USA

Notes	Repeated freezing and thawing is not recommended. Store working aliquots at 4 centigrade for up to one week.
Storage	The shelf life is related to many factors, storage state, buffer ingredients, storage temperature and the stability of the protein itself. Generally, the shelf life of liquid form is 6 months at -20 centigrade/-80 centigrade. The shelf life of lyophilized form is 12 months at -20 centigrade/-80 centigrade.
Concentration	A hardcopy of COA with reconstitution instruction is sent along with the products.

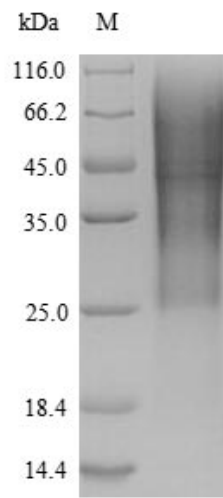
GENE INFORMATION

Gene Name	Glpr glucagon-like peptide 1 receptor [<i>Rattus norvegicus</i>]
Official Symbol	GLP1R
Synonyms	GLP1R; GLP-1R; GLP-1-R; GLP-1 receptor; Glip; RATGL1RCP;
Gene ID	25051
mRNA Refseq	NM_012728
Protein Refseq	NP_036860
UniProt ID	P32301

 Tel: 1-631-559-9269 1-516-512-3133

 Email: info@creative-biomart.com  Fax: 1-631-938-8127

 45-1 Ramsey Road, Shirley, NY 11967, USA



(Tris-Glycine gel) Discontinuous SDS-PAGE (reduced) with 5% enrichment gel and 15% separation gel.

 Tel: 1-631-559-9269 1-516-512-3133

 Email: info@creative-biomart.com  Fax: 1-631-938-8127

 45-1 Ramsey Road, Shirley, NY 11967, USA