

## Recombinant Human GLP1R Protein, Biotinylated

Cat. No. GLP1R-22H Lot. No. (See product label)

### SPECIFICATION

<b>Product Overview</b>	Recombinant Human GLP1R Protein is produced by HEK293 expression system and biotinylated in vitro.
<b>Species</b>	Human
<b>Source</b>	HEK293
<b>Form</b>	Sterile PBS, pH 7.4
<b>AA Sequence</b>	MAGAPGPLRLALLLLGMVGRAGPRPQGATVSLWETVQKWREYRRQCQRSLTEDP PPATDLFCNRTFDEYACWPDGEPGSFVNVSCPWYLPWASSVPQGHVYRFCTAEGL WLQKDNSSLPWRDLSECEESKRGERSSPPEEQLLFLY
<b>Endotoxin</b>	< 1.0 EU per µg of the protein as determined by the LAL method
<b>Storage</b>	Store it under sterile conditions at -20 to -80 centigrade. It is recommended that the protein be aliquoted for optimal storage. Avoid repeated freeze-thaw cycles.
<b>Concentration</b>	0.26 mg/mL
<b>Conjugation</b>	Biotin

### GENE INFORMATION

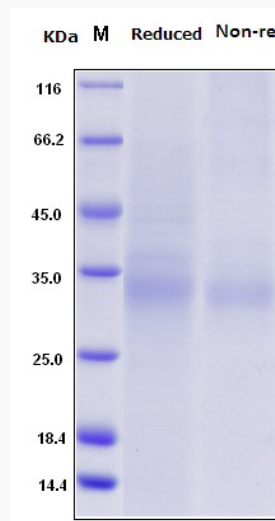
**Gene Name** [GLP1R glucagon-like peptide 1 receptor \[ Homo sapiens \]](#)

 Tel: 1-631-559-9269 1-516-512-3133

 Email: [info@creative-biomart.com](mailto:info@creative-biomart.com)  Fax: 1-631-938-8127

 45-1 Ramsey Road, Shirley, NY 11967, USA

<b>Official Symbol</b>	GLP1R
<b>Synonyms</b>	GLP1R; glucagon-like peptide 1 receptor; GLP-1R; GLP-1-R; GLP-1 receptor; MGC138331;
<b>Gene ID</b>	2740
<b>mRNA Refseq</b>	NM_002062
<b>Protein Refseq</b>	NP_002053
<b>MIM</b>	138032
<b>UniProt ID</b>	P43220



SDS-PAGE analysis of purified recombinant Human GLP1R

Tel: 1-631-559-9269 1-516-512-3133

Email: [info@creative-biomart.com](mailto:info@creative-biomart.com) Fax: 1-631-938-8127

45-1 Ramsey Road, Shirley, NY 11967, USA