

Recombinant Human GLP1R Full Length Transmembrane protein, His-tagged

Cat. No. GLP1R-2378H Lot. No. (See product label)

SPECIFICATION

Product Overview	Recombinant Human GLP1R protein(P43220)(24-463aa), fused to N-terminal His tag, was expressed in E. coli.
Species	Human
Source	E.coli
ProteinLength	24-463aa
Form	<p>If the delivery form is liquid, the default storage buffer is Tris/PBS-based buffer, 5%-50% glycerol.</p> <p>If the delivery form is lyophilized powder, the buffer before lyophilization is Tris/PBS-based buffer, 6% Trehalose, pH 8.0.</p>
Molecular Mass	53.6 kDa
AA Sequence	<p>RPQGATVSLWETVQKWREYRRQCQRSLTEDPPPATDLFCNRTFDEYACWPDGEP GSFVNVSCPWYLPWASSVPQGHVYRFCTAEGWLWQKDNSSLPWRDLSECEESKR GERSSPEEQLLFLYIIYTVGYALSFSALVIASAILLGFRLHCTRNYIHLNLFASFILRAL SVFIKDAALKWMYSTAAQQHQWDGLLSYQDSLSCRLVFLMQYCVAANYWLLVE GVYLYTLLAFSVLSEQWIFRLYVSIGWGVPLLFVVPWGIVKLYEDEGCWTRNSNMN YWLIIRLPILFAIGNFLIFVRVICIVVSKLKANLMCKTDIKCRLAKSTLTLIPLLGTHEVIF AFVMDEHARGTLRFIKLFTELSFTSFQGLMVAILYCFVNNEVQLEFRKSWERWRLEH LHIQRDSSMKPLKCPTSSLSSGATAGSSMYTATCQASCS</p>

 Tel: 1-631-559-9269 1-516-512-3133

 Email: info@creative-biomart.com  Fax: 1-631-938-8127

 45-1 Ramsey Road, Shirley, NY 11967, USA

Purity	Greater than 85% as determined by SDS-PAGE.
Storage	Store at -20°C/-80°C upon receipt, aliquoting is necessary for mutiple use. Avoid repeated freeze-thaw cycles.
Reconstitution	Please reconstitute protein in deionized sterile water to a concentration of 0.1-1.0 mg/mL. We recommend to add 5-50% of glycerol (final concentration) and aliquot for long-term storage at -20°C/-80°C. Our default final concentration of glycerol is 50%.

GENE INFORMATION

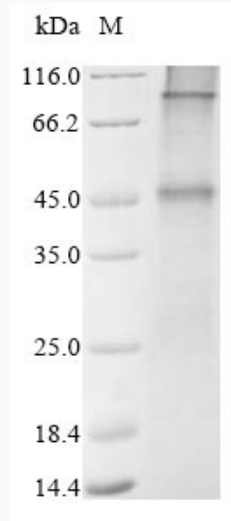
Gene Name	GLP1R glucagon-like peptide 1 receptor [Homo sapiens]
Official Symbol	GLP1R
Synonyms	GLP1R; glucagon-like peptide 1 receptor; GLP-1R; GLP-1-R; GLP-1 receptor; MGC138331;
Gene ID	2740
mRNA Refseq	NM_002062
Protein Refseq	NP_002053
MIM	138032
UniProt ID	P43220

 Tel: 1-631-559-9269 1-516-512-3133

 Email: info@creative-biomart.com  Fax: 1-631-938-8127

 45-1 Ramsey Road, Shirley, NY 11967, USA

SDS-PAGE



 Tel: 1-631-559-9269 1-516-512-3133

 Email: info@creative-biomart.com  Fax: 1-631-938-8127

 45-1 Ramsey Road, Shirley, NY 11967, USA