

## Recombinant Human GLP1R Protein (24-145 aa), His-tagged

Cat. No. GLP1R-2802H Lot. No. (See product label)

### SPECIFICATION

<b>Product Overview</b>	Recombinant Human GLP1R Protein (24-145 aa) is produced by Baculovirus expression system. This protein is fused with a 10xHis tag at the N-terminal. Research Area: Neuroscience. Protein Description: Partial.
<b>Species</b>	Human
<b>Source</b>	Insect Cells
<b>ProteinLength</b>	24-145 aa
<b>Description</b>	This is a receptor for glucagon-like peptide 1. The activity of this receptor is mediated by G proteins which activate adenylyl cyclase.
<b>Form</b>	Tris-based buffer,50% glycerol
<b>Molecular Mass</b>	16.8 kDa
<b>AA Sequence</b>	RPQGATVSLWETVQKWREYRRQCQRSLTEDPPPATDLFCNRTFDEYACWPDGEP GSFVNVSCPWYLPWASSVPQGHVYRFCTA EGLWLQKDNSSLPWRDLSECEESKR GERSSPEEQLLFLY
<b>Purity</b>	> 85% as determined by SDS-PAGE.
<b>Notes</b>	Repeated freezing and thawing is not recommended. Store working aliquots at 4 centigrade for up to one week.

 Tel: 1-631-559-9269 1-516-512-3133

 Email: [info@creative-biomart.com](mailto:info@creative-biomart.com)  Fax: 1-631-938-8127

 45-1 Ramsey Road, Shirley, NY 11967, USA

**Storage**

The shelf life is related to many factors, storage state, buffer ingredients, storage temperature and the stability of the protein itself. Generally, the shelf life of liquid form is 6 months at -20 centigrade/-80 centigrade. The shelf life of lyophilized form is 12 months at -20 centigrade/-80 centigrade.

**Concentration**

A hardcopy of COA will be sent along with the products. Please refer to it for detailed information.

## GENE INFORMATION

**Gene Name**

GLP1R glucagon-like peptide 1 receptor [ Homo sapiens ]

**Official Symbol**

GLP1R

**Synonyms**

GLP1R; glucagon-like peptide 1 receptor; GLP-1R; GLP-1-R; GLP-1 receptor; MGC138331;

**Gene ID**

2740

**mRNA Refseq**

NM\_002062

**Protein Refseq**

NP\_002053

**MIM**

138032

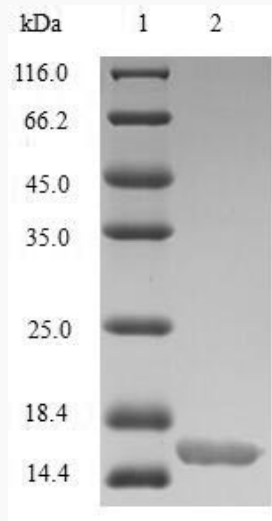
**UniProt ID**

P43220

 Tel: 1-631-559-9269 1-516-512-3133

 Email: [info@creative-biomart.com](mailto:info@creative-biomart.com)  Fax: 1-631-938-8127

 45-1 Ramsey Road, Shirley, NY 11967, USA



(Tris-Glycine gel) Discontinuous SDS-PAGE (reduced) with 5% enrichment gel and 15% separation gel.

 Tel: 1-631-559-9269 1-516-512-3133

 Email: [info@creative-biomart.com](mailto:info@creative-biomart.com)  Fax: 1-631-938-8127

 45-1 Ramsey Road, Shirley, NY 11967, USA