

Recombinant Human GLP1R protein, His&Myc-tagged

Cat. No. GLP1R-4643H Lot. No. (See product label)

SPECIFICATION

Product Overview	Recombinant Human GLP1R protein(P43220)(24-145aa), fused with N-terminal His tag and C-terminal Myc tag, was expressed in HEK293.
Species	Human
Source	HEK293
ProteinLength	24-145aa
Tag	N-His&C-Myc
Form	Lyophilized from a 0.2 µm filtered 20 mM Tris-HCl, 0.5 M NaCl, 6% Trehalose, pH 8.0
Bio-activity	Measured by its binding ability in a functional ELISA. Immobilized Human GLP1R at 2 µg/mL can bind Anti-GLP1R recombinant antibody, the EC50 is 54.54-94.23 ng/mL.
Molecular Mass	19.3 kDa
Endotoxin	Less than 1.0 EU/ug as determined by LAL method.
Purity	Greater than 95% as determined by SDS-PAGE.
Storage	Store at -20°C/-80°C upon receipt, aliquoting is necessary for mutiple use. Avoid repeated freeze-thaw cycles.

 Tel: 1-631-559-9269 1-516-512-3133

 Email: info@creative-biomart.com  Fax: 1-631-938-8127

 45-1 Ramsey Road, Shirley, NY 11967, USA



Reconstitution We recommend that this vial be briefly centrifuged prior to opening to bring the contents to the bottom. Please reconstitute protein in deionized sterile water to a concentration of 0.1-1.0 mg/mL. We recommend to add 5-50% of glycerol (final concentration) and aliquot for long-term storage at -20°C/-80°C.

AA Sequence RPQGATVSLWETVQKWREYRRQCQRSLTEDPPPATDLFCNRTFDEYACWPDGEP
GSFVNVSCPWYLPWASSVPQGHVYRFCTAEGLWLQKDNSSLPWRDLSECEESKR
GERSSPEEQLLFLY

GENE INFORMATION

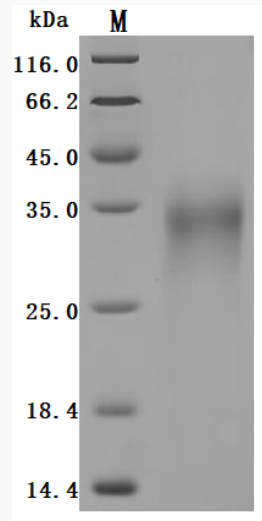
Gene Name	GLP1R glucagon-like peptide 1 receptor [Homo sapiens]
Official Symbol	GLP1R
Synonyms	GLP1R; glucagon-like peptide 1 receptor; GLP-1R; GLP-1-R; GLP-1 receptor; MGC138331;
Gene ID	2740
mRNA Refseq	NM_002062
Protein Refseq	NP_002053
MIM	138032
UniProt ID	P43220

Tel: 1-631-559-9269 1-516-512-3133

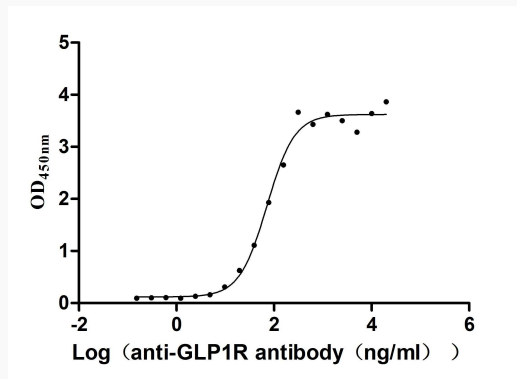
Email: info@creative-biomart.com Fax: 1-631-938-8127

45-1 Ramsey Road, Shirley, NY 11967, USA

SDS-PAGE



Activity



 Tel: 1-631-559-9269 1-516-512-3133

 Email: info@creative-biomart.com  Fax: 1-631-938-8127

 45-1 Ramsey Road, Shirley, NY 11967, USA