

Recombinant Cynomolgus monkey GLP1R protein, His-tagged

Cat. No. GLP1R-4649C Lot. No. (See product label)

SPECIFICATION

| | |
|-------------------------|---|
| Product Overview | Recombinant Cynomolgus monkey GLP1R protein(F8V479)(24-144 aa), fused with N-terminal His tag, was expressed in Yeast. |
| Species | Cynomolgus monkey |
| Source | Yeast |
| ProteinLength | 24-144 aa |
| Form | For liquid formulations, the standard storage buffer consists of a Tris or PBS based solution supplemented with 5-50% glycerol. When provided as lyophilized powder, the product undergoes freeze-drying from a Tris- or PBS-based formulation containing 6% trehalose, adjusted to pH 8.0 prior to the lyophilization process. |
| Molecular Mass | 16.1 kDa |
| AASequence | RPQGATVSLWETVQKWREYRRQCQRSLTEDPPPATDLFCNRTFDEYACWPDGEP GSFVNVSCPWYLPWASSVPQGHVYRFCTAEGLWLQKDNSSLPWRDLSECEESKR GERNSPEEQLLSL |
| Purity | Greater than 95% as determined by SDS-PAGE. |
| Storage | Store at -20°C/-80°C upon receipt, aliquoting is necessary for mutiple use. Avoid repeated freeze-thaw cycles. |

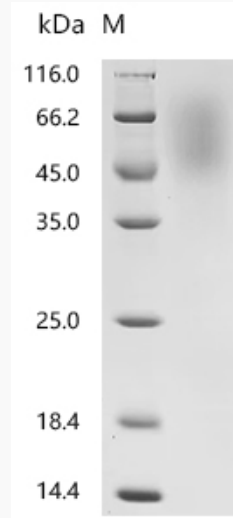
 Tel: 1-631-559-9269 1-516-512-3133

 Email: info@creative-biomart.com  Fax: 1-631-938-8127

 45-1 Ramsey Road, Shirley, NY 11967, USA

Reconstitution

Please reconstitute protein in deionized sterile water to a concentration of 0.1-1.0 mg/mL. Aliquot for long-term storage at -80°C.

SDS-PAGE

 Tel: 1-631-559-9269 1-516-512-3133

 Email: info@creative-biomart.com  Fax: 1-631-938-8127

 45-1 Ramsey Road, Shirley, NY 11967, USA