

## Recombinant Human GLP1R protein, His-tagged

Cat. No. GLP1R-5019H Lot. No. (See product label)

### SPECIFICATION

<b>Product Overview</b>	Recombinant Human GLP1R protein(P43220)(24-145aa), fused to N-terminal His tag, was expressed in HEK293.
<b>Species</b>	Human
<b>Source</b>	HEK293
<b>ProteinLength</b>	24-145aa
<b>Form</b>	<p>If the delivery form is liquid, the default storage buffer is Tris/PBS-based buffer, 5%-50% glycerol.</p> <p>If the delivery form is lyophilized powder, the buffer before lyophilization is Tris/PBS-based buffer, 6% Trehalose, pH 8.0.</p>
<b>Molecular Mass</b>	18.3 kDa
<b>Purity</b>	Greater than 90% as determined by SDS-PAGE.
<b>Storage</b>	Store at -20°C/-80°C upon receipt, aliquoting is necessary for mutiple use. Avoid repeated freeze-thaw cycles.
<b>Reconstitution</b>	Please reconstitute protein in deionized sterile water to a concentration of 0.1-1.0 mg/mL. We recommend to add 5-50% of glycerol (final concentration) and aliquot for long-term storage at -20°C/-80°C. Our default final concentration of glycerol is 50%.

 Tel: 1-631-559-9269 1-516-512-3133

 Email: [info@creative-biomart.com](mailto:info@creative-biomart.com)  Fax: 1-631-938-8127

 45-1 Ramsey Road, Shirley, NY 11967, USA

## GENE INFORMATION

**Gene Name** GLP1R glucagon-like peptide 1 receptor [ Homo sapiens ]

**Official Symbol** GLP1R

**Synonyms** GLP1R; glucagon-like peptide 1 receptor; GLP-1R; GLP-1-R; GLP-1 receptor; MGC138331;

**Gene ID** 2740

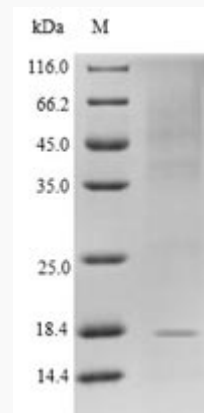
**mRNA Refseq** NM\_002062

**Protein Refseq** NP\_002053

**MIM** 138032

**UniProt ID** P43220

### SDS-PAGE



Tel: 1-631-559-9269 1-516-512-3133

Email: [info@creative-biomart.com](mailto:info@creative-biomart.com) Fax: 1-631-938-8127

45-1 Ramsey Road, Shirley, NY 11967, USA