

Recombinant Human GLP1R Protein, hFc-tagged

Cat. No. GLP1R-583H Lot. No. (See product label)

SPECIFICATION

Product Overview	Recombinant Human GLP1R Protein(P43220)(Arg24-Tyr145), fused with C-terminal hFc tag, was expressed in HEK293.
Species	Human
Source	HEK293
ProteinLength	1-145 a.a.
Tag	C-hFc
Form	Lyophilized from a 0.2 µm filtered solution of PBS, pH 7.4.
Bio-activity	Immobilized Recombinant Human GLP-1R (C-Fc) at 5µg/ml (100 µl/well) can bind Anti-GLP-1R Antibody (Human IgG1). The ED50 of Anti-GLP-1R Antibody (Human IgG1) is 6.23 ng/ml.
Molecular Mass	41.2 KDa
Endotoxin	< 1 EU/µg as determined by LAL test.
Purity	Greater than 90% as determined by reducing SDS-PAGE.
Storage	Lyophilized protein should be stored at ≤ -20°C, stable for one year after receipt. Reconstituted protein solution can be stored at 2-8°C for 2-7 days.

 Tel: 1-631-559-9269 1-516-512-3133

 Email: info@creative-biomart.com  Fax: 1-631-938-8127

 45-1 Ramsey Road, Shirley, NY 11967, USA

Aliquots of reconstituted samples are stable at $\leq -20^{\circ}\text{C}$ for 3 months.

Reconstitution

Always centrifuge tubes before opening. Do not mix by vortex or pipetting.
It is not recommended to reconstitute to a concentration less than 100 $\mu\text{g}/\text{ml}$.
Dissolve the lyophilized protein in distilled water.
Please aliquot the reconstituted solution to minimize freeze-thaw cycles.

GENE INFORMATION

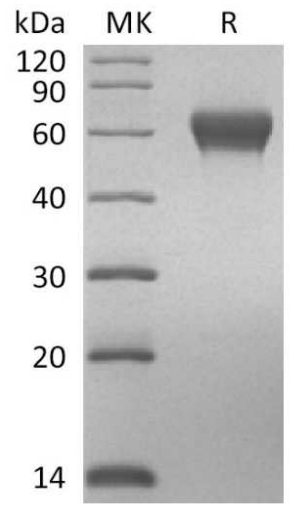
Gene Name	GLP1R glucagon-like peptide 1 receptor [Homo sapiens]
Official Symbol	GLP1R
Synonyms	GLP1R; glucagon-like peptide 1 receptor; GLP-1R; GLP-1-R; GLP-1 receptor; MGC138331;
Gene ID	2740
mRNA Refseq	NM_002062
Protein Refseq	NP_002053
MIM	138032
UniProt ID	P43220

 Tel: 1-631-559-9269 1-516-512-3133

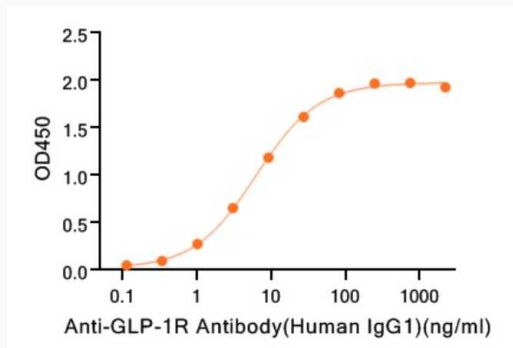
 Email: info@creative-biomart.com  Fax: 1-631-938-8127

 45-1 Ramsey Road, Shirley, NY 11967, USA

SDS-PAGE



ELISA



 Tel: 1-631-559-9269 1-516-512-3133

 Email: info@creative-biomart.com  Fax: 1-631-938-8127

 45-1 Ramsey Road, Shirley, NY 11967, USA