

Recombinant Human GLP1R protein, mFc-tagged

Cat. No. GLP1R-584H Lot. No. (See product label)

SPECIFICATION

Product Overview	Recombinant Human GLP1R protein(P43220)(Arg24-Glu139) is expressed from HEK293 with mFc (IgG1) tag at the C-terminus.
Species	Human
Source	HEK293
ProteinLength	Arg24-Glu139
Form	Lyophilized from 0.22 µm filtered solution in PBS (pH 7.4). Normally 8% trehalose is added as protectant before lyophilization.
Bio-activity	Immobilized Human GLP-1R, mFc Tag at 1µg/ml (100µl/well) on the plate. Dose response curve for Anti-GLP-1R Antibody, hFc Tag with the EC50 of 17.0ng/ml determined by ELISA.
Molecular Mass	The protein has a predicted MW of 39.20 kDa. Due to glycosylation, the protein migrates to 50-65 kDa based on Tris-Bis PAGE result.
Endotoxin	Less than 1EU per µg by the LAL method.
Purity	> 95% as determined by Tris-Bis PAGE > 95% as determined by HPLC
Storage	-20 to -80°C for 12 months as supplied from date of receipt. -80°C for 3-6 months

 Tel: 1-631-559-9269 1-516-512-3133

 Email: info@creative-biomart.com  Fax: 1-631-938-8127

 45-1 Ramsey Road, Shirley, NY 11967, USA

after reconstitution. 2-8°C for 2-7 days after reconstitution. Recommend to aliquot the protein into smaller quantities for optimal storage. Please minimize freeze-thaw cycles.

Reconstitution

Centrifuge the tube before opening. Reconstituting to a concentration more than 100 µg/ml is recommended. Dissolve the lyophilized protein in distilled water.

GENE INFORMATION

Gene Name [GLP1R glucagon-like peptide 1 receptor \[Homo sapiens \]](#)

Official Symbol [GLP1R](#)

Synonyms [GLP1R](#); [glucagon-like peptide 1 receptor](#); [GLP-1R](#); [GLP-1-R](#); [GLP-1 receptor](#); [MGC138331](#);

Gene ID [2740](#)

mRNA Refseq [NM_002062](#)

Protein Refseq [NP_002053](#)

MIM [138032](#)

UniProt ID [P43220](#)

 Tel: 1-631-559-9269 1-516-512-3133

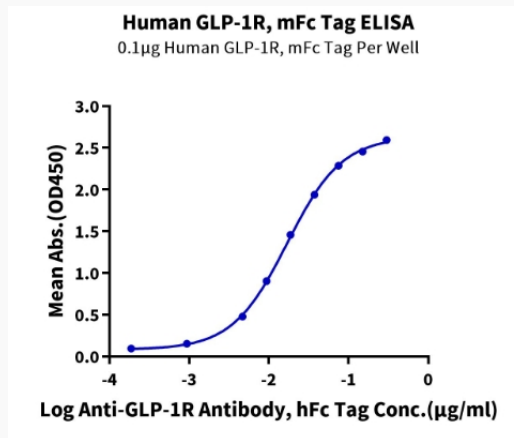
 Email: info@creative-biomart.com  Fax: 1-631-938-8127

 45-1 Ramsey Road, Shirley, NY 11967, USA

Tris-Bis PAGE



ELISA Data



 Tel: 1-631-559-9269 1-516-512-3133

 Email: info@creative-biomart.com  Fax: 1-631-938-8127

 45-1 Ramsey Road, Shirley, NY 11967, USA