

Recombinant Human GLP1R protein, hFc-tagged

Cat. No. GLP1R-585H Lot. No. (See product label)

SPECIFICATION

Product Overview	Recombinant Human GLP1R protein(P43220)(Arg24-Glu139), fused with C-terminal hFc tag, was expressed in HEK293.
Species	Human
Source	HEK293
ProteinLength	Arg24-Glu139
Form	Lyophilized from sterile PBS, pH 7.4. Normally 5 % – 8% trehalose is added as protectants before lyophilization.
Molecular Mass	The protein has a predicted molecular mass of 39.7 kDa after removal of the signal peptide. The apparent molecular mass of GLP1R-hFc is approximately 35-70 kDa due to glycosylation.
Purity	The purity of the protein is greater than 95% as determined by SDS-PAGE and Coomassie blue staining.
Storage	Store at -20°C to -80°C for 12 months in lyophilized form. After reconstitution, if not intended for use within a month, aliquot and store at -80°C(Avoid repeated freezing and thawing). Lyophilized proteins are shipped at ambient temperature.
Reconstitution	It is recommended that sterile water be added to the vial to prepare a stock solution of 0.2 ug/ul. Centrifuge the vial at 4°C before opening to recover the entire contents.

 Tel: 1-631-559-9269 1-516-512-3133

 Email: info@creative-biomart.com  Fax: 1-631-938-8127

 45-1 Ramsey Road, Shirley, NY 11967, USA

GENE INFORMATION

Gene Name GLP1R glucagon-like peptide 1 receptor [Homo sapiens]

Official Symbol GLP1R

Synonyms GLP1R; glucagon-like peptide 1 receptor; GLP-1R; GLP-1-R; GLP-1 receptor; MGC138331;

Gene ID 2740

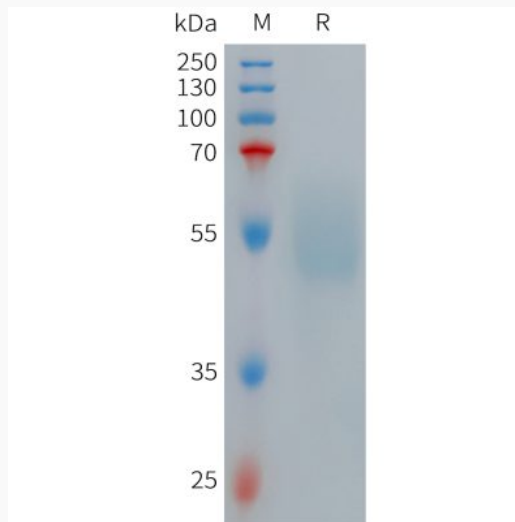
mRNA Refseq NM_002062

Protein Refseq NP_002053

MIM 138032

UniProt ID P43220

SDS-PAGE



Tel: 1-631-559-9269 1-516-512-3133

Email: info@creative-biomart.com Fax: 1-631-938-8127

45-1 Ramsey Road, Shirley, NY 11967, USA