

Recombinant Human GLRA1 protein, His&Myc-tagged

Cat. No. GLRA1-4344H Lot. No. (See product label)

SPECIFICATION

Product Overview	Recombinant Human GLRA1 protein(P23415)(29-250aa), fused with N-terminal His tag and C-terminal Myc tag, was expressed in E.coli.
Species	Human
Source	E.coli
ProteinLength	29-250aa
Form	If the delivery form is liquid, the default storage buffer is Tris/PBS-based buffer, 5%-50% glycerol. If the delivery form is lyophilized powder, the buffer before lyophilization is Tris/PBS-based buffer, 6% Trehalose, pH 8.0.
Molecular Mass	33.1 kDa
Purity	Greater than 90% as determined by SDS-PAGE.
Storage	Store at -20°C/-80°C upon receipt, aliquoting is necessary for mutiple use. Avoid repeated freeze-thaw cycles.
Reconstitution	We recommend that this vial be briefly centrifuged prior to opening to bring the contents to the bottom. Please reconstitute protein in deionized sterile water to a concentration of 0.1-1.0 mg/mL.We recommend to add 5-50% of glycerol (final concentration) and aliquot for long-term storage at -20°C/-80°C.

 Tel: 1-631-559-9269 1-516-512-3133

 Email: info@creative-biomart.com  Fax: 1-631-938-8127

 45-1 Ramsey Road, Shirley, NY 11967, USA

AA Sequence

ARSAPKPMSPSDFLDKLMGRTSGYDARIRPNFKGPPVNVSCNIFINSFGSIAETTMD
 YRVNIFLRQQWNDPRLAYNEYPDDSLDLDPMSLDSIWKPDFFANEKGAHFHEITTD
 NKLLRISRNGNVLYSIRITLTLACPMDLKNFPMQVQTCIMQLESFGYTMNDLIFEWQE
 QGAVQVADGLTLPQFILKEEKDLRYCTKHYNNTGKFTCIARFHLERQMGY

GENE INFORMATION

Gene Name [GLRA1 glycine receptor, alpha 1 \[Homo sapiens \]](#)

Official Symbol [GLRA1](#)

Synonyms

GLRA1; glycine receptor, alpha 1; glycine receptor, alpha 1 (startle disease/hyperekplexia) , STHE; glycine receptor subunit alpha-1; startle disease/hyperekplexia; stiff person syndrome; glycine receptor 48 kDa subunit; glycine receptor strychnine-binding subunit; STHE; MGC138878; MGC138879;

Gene ID [2741](#)

mRNA Refseq [NM_000171](#)

Protein Refseq [NP_000162](#)

MIM [138491](#)

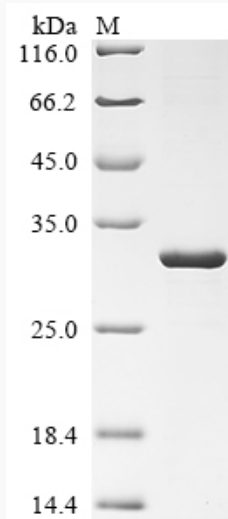
UniProt ID [P23415](#)

 Tel: 1-631-559-9269 1-516-512-3133

 Email: info@creative-biomart.com  Fax: 1-631-938-8127

 45-1 Ramsey Road, Shirley, NY 11967, USA

SDS-PAGE



 Tel: 1-631-559-9269 1-516-512-3133

 Email: info@creative-biomart.com  Fax: 1-631-938-8127

 45-1 Ramsey Road, Shirley, NY 11967, USA