

Recombinant Human GLRA2 Protein, GST-tagged

Cat. No. GLRA2-4972H Lot. No. (See product label)

SPECIFICATION

Product Overview	Human GLRA2 full-length ORF (AAH32864, 28 a.a. - 452 a.a.) recombinant protein with GST-tag at N-terminal.
Species	Human
Source	Wheat Germ
Description	The glycine receptor consists of two subunits, alpha and beta, and acts as a pentamer. The protein encoded by this gene is an alpha subunit and can bind strychnine. Several transcript variants encoding different isoforms have been found for this gene.[provided by RefSeq, Jan 2010]
Molecular Mass	72.49 kDa
AA Sequence	<p>KDHDSRSGKQPSQTLSPSDFLDKLMGRTSGYDARIRPNFKGPPVNVTCNIFINSFGS VTETTMDYRVNIFLRQQWNSRLAYSEYPDDSLDLDPMSMLDSIWKPDLFFANEKGA NFHDVTTDNKLLRISKNGKVLYSIRLTLTLSCPMDLKNFPMQVQCTMQLESFGYTM NDLIFEWLSGDPVQVAEGLTLPQFILKEEKELGYCTKHYNTGKFTCIEVKFHLEKQM GYLLIQMYIPSLILVLSWVSFWINMDAAPARVALGITTVLMTTQSSGSRASLPKVS YVKAIWIWMAVCLLFVFAALLEYAAVNFVSRQHKEFLRLRRRQKRQNKEDVTRESRF NFSGYGMGHCLQVKDGTAVKATPANPLPQPPKDGDAIKKKFVDRAKRIDTISRAFP LAFLIFNIFYWITYKIIRHEDVHKK</p>
Applications	Enzyme-linked Immunoabsorbent Assay Western Blot (Recombinant protein)

 Tel: 1-631-559-9269 1-516-512-3133

 Email: info@creative-biomart.com  Fax: 1-631-938-8127

 45-1 Ramsey Road, Shirley, NY 11967, USA

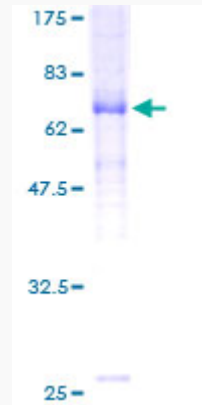
	Antibody Production Protein Array
Notes	Best use within three months from the date of receipt of this protein.
Storage	Store at -80 centigrade. Aliquot to avoid repeated freezing and thawing.
Storage Buffer	50 mM Tris-HCl, 10 mM reduced Glutathione, pH=8.0 in the elution buffer.
GENE INFORMATION	
Gene Name	GLRA2 glycine receptor, alpha 2 [Homo sapiens]
Official Symbol	GLRA2
Synonyms	GLRA2; glycine receptor, alpha 2; GLR; glycine receptor subunit alpha-2; glycine receptor alpha 2 subunit; glycine receptor, alpha-2 polypeptide;
Gene ID	2742
mRNA Refseq	NM_001118885
Protein Refseq	NP_001112357
MIM	305990
UniProt ID	P23416

 Tel: 1-631-559-9269 1-516-512-3133

 Email: info@creative-biomart.com  Fax: 1-631-938-8127

 45-1 Ramsey Road, Shirley, NY 11967, USA

**Quality Control
Testing**



12.5% SDS-PAGE Stained with Coomassie Blue.

 Tel: 1-631-559-9269 1-516-512-3133

 Email: info@creative-biomart.com  Fax: 1-631-938-8127

 45-1 Ramsey Road, Shirley, NY 11967, USA