

Recombinant Human GLRX2 Protein, GST-tagged

Cat. No. GLRX2-4976H Lot. No. (See product label)

SPECIFICATION

Product Overview	Human GLRX2 full-length ORF (AAH28113, 1 a.a. - 124 a.a.) recombinant protein with GST-tag at N-terminal.
Species	Human
Source	Wheat Germ
Description	Glutaredoxins (e.g., GLRX; MIM 600443) are a family of glutathione-dependent hydrogen donors that participate in a variety of cellular redox reactions.[supplied by OMIM
Molecular Mass	39.38 kDa
AA Sequence	MESNTSSSLENLATAPVNQIQETISDNCVVIFSKTSCSYCTMAKKLFHDMNVNYKVV ELDLLEYGNQFQDALYKMTGERTVPRIFVNGTFIGGATDTHRLHKEGKLLPLVHQC LKKSKRKEFQ
Applications	Enzyme-linked Immunoabsorbent Assay Western Blot (Recombinant protein) Antibody Production Protein Array
Notes	Best use within three months from the date of receipt of this protein.
Storage	Store at -80 centigrade. Aliquot to avoid repeated freezing and thawing.

 Tel: 1-631-559-9269 1-516-512-3133

 Email: info@creative-biomart.com  Fax: 1-631-938-8127

 45-1 Ramsey Road, Shirley, NY 11967, USA

Storage Buffer 50 mM Tris-HCl, 10 mM reduced Glutathione, pH=8.0 in the elution buffer.

GENE INFORMATION

Gene Name GLRX2 glutaredoxin 2 [Homo sapiens]

Official Symbol GLRX2

Synonyms GLRX2; glutaredoxin 2; bA101E13.1; bA101E13.1 (GRX2 glutaredoxin (thioltransferase) 2); GRX2; CGI-133;

Gene ID 51022

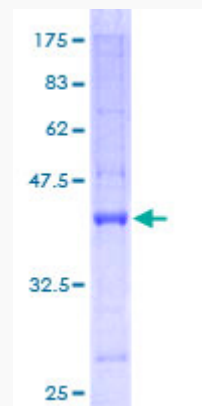
mRNA Refseq NM_001243399

Protein Refseq NP_001230328

MIM 606820

UniProt ID Q9NS18

Quality Control Testing



 Tel: 1-631-559-9269 1-516-512-3133

 Email: info@creative-biomart.com  Fax: 1-631-938-8127

 45-1 Ramsey Road, Shirley, NY 11967, USA



12.5% SDS-PAGE Stained with Coomassie Blue.

 Tel: 1-631-559-9269 1-516-512-3133

 Email: info@creative-biomart.com  Fax: 1-631-938-8127

 45-1 Ramsey Road, Shirley, NY 11967, USA