

Recombinant Human GLRX2 Protein, Myc/DDK-tagged, C13 and N15-labeled

Cat. No. GLRX2-5547H **Lot. No.** (See product label)

SPECIFICATION

Product Overview	GLRX2 MS Standard C13 and N15-labeled recombinant protein (NP_057150) with a C-terminal MYC/DDK tag, was expressed in HEK293 cells.
Species	Human
Source	HEK293
Description	The protein encoded by this gene is a member of the glutaredoxin family of proteins, which maintain cellular thiol homeostasis. These proteins are thiol-disulfide oxidoreductases that use a glutathione-binding site and one or two active cysteines in their active site. This gene undergoes alternative splicing to produce multiple isoforms, one of which is ubiquitously expressed and localizes to mitochondria, where it functions in mitochondrial redox homeostasis and is important for the protection against and recovery from oxidative stress. Other isoforms, which have more restrictive expression patterns, show cytosolic and nuclear localization, and are thought to function in cellular differentiation and transformation, possibly with a role in tumor progression.
Molecular Mass	18.5 kDa
AA Sequence	MNPRDKQVSRFSPDKDVTWVALAGIQRSGSPGRTRSAARRMESNTSSSLENLAT APVNQIQETISDNCVVIFSKTSCSYCTMAKCLFHDMNVNYKVVLDLLEYGNQFQDA LYKMTGERTVPRIFVNGTFIGGATDTHRLHKEGKLLPLVHQCYLKSKRKEFQTRTR

 Tel: 1-631-559-9269 1-516-512-3133

 Email: info@creative-biomart.com  Fax: 1-631-938-8127

 45-1 Ramsey Road, Shirley, NY 11967, USA

PLEQKLISEEDLAANDILDYKDDDDKV

Purity > 80% as determined by SDS-PAGE and Coomassie blue staining

Stability Stable for 3 months from receipt of products under proper storage and handling conditions.

Storage Store at -80 centigrade. Avoid repeated freeze-thaw cycles.

Concentration 50 µg/mL as determined by BCA

Storage Buffer 100 mM glycine, 25 mM Tris-HCl, pH 7.3.

GENE INFORMATION

Gene Name [GLRX2 glutaredoxin 2 \[Homo sapiens \(human\) \]](#)

Official Symbol [GLRX2](#)

Synonyms [GLRX2](#); glutaredoxin 2; [bA101E13.1](#); [bA101E13.1 \(GRX2 glutaredoxin \(thioltransferase\) 2\)](#); [GRX2](#); [CGI-133](#);

Gene ID [51022](#)

mRNA Refseq [NM_016066](#)

Protein Refseq [NP_057150](#)

MIM [606820](#)

UniProt ID [Q9NS18](#)

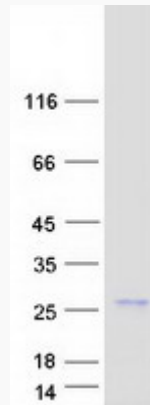
 Tel: 1-631-559-9269 1-516-512-3133

 Email: info@creative-biomart.com  Fax: 1-631-938-8127

 45-1 Ramsey Road, Shirley, NY 11967, USA



SDS-PAGE



Tel: 1-631-559-9269 1-516-512-3133

Email: info@creative-biomart.com Fax: 1-631-938-8127

45-1 Ramsey Road, Shirley, NY 11967, USA