

Recombinant Human GLRX2 protein, GST-tagged

Cat. No. GLRX2-6856H Lot. No. (See product label)

SPECIFICATION

| | |
|-------------------------|--|
| Product Overview | Recombinant Human GLRX2 protein(1-148 aa), fused with N-terminal GST tag, was expressed in E.coli. |
| Species | Human |
| Source | E.coli |
| ProteinLength | 1-148 aa |
| Form | The purified protein was lyophilized from sterile phosphate-buffered saline (PBS: 58 mM Na ₂ HPO ₄ , 17 mM NaH ₂ PO ₄ , 68 mM NaCl, pH 8.0). Prior to lyophilization, 5% (w/v) trehalose and 5% (w/v) mannitol were incorporated as cryoprotective excipients. The protein was eluted with a buffer containing 100 mM reduced glutathione (GSH). |
| AASequence | RSGSAGWLDRAAGAAGAAAAAASGMESNTSSSLENLATAPVNQIQETISDNCVVIFS KTSCSYCTMAKCLFHDMMNVNYKVVLDLLEYGNQFQDALYKMTGERTVPRIFVNGT FIGGATDTHRLHKEGKLLPLVHQCYLKSKRKEFQ |
| Purity | 85%, by SDS-PAGE with Coomassie Brilliant Blue staining. |
| Storage | Store at 2-8°C for 1-2 weeks. Aliquot and store at -20°C to -80°C for up to 3 months, reconstitution with sterile water and addition of an equal volume of glycerol. Avoid repeat freeze-thaw cycles. |

 Tel: 1-631-559-9269 1-516-512-3133

 Email: info@creative-biomart.com  Fax: 1-631-938-8127

 45-1 Ramsey Road, Shirley, NY 11967, USA

Reconstitution

Dissolve the product in 200 µl sterile water to achieve a working concentration of 0.25 g/µl. If experimental compatibility allows, mix the aqueous solution with an equal volume of glycerol (1:1 ratio) after initial reconstitution.

GENE INFORMATION

Gene Name GLRX2 glutaredoxin 2 [Homo sapiens]

Official Symbol GLRX2

Synonyms GLRX2; glutaredoxin 2; bA101E13.1; bA101E13.1 (GRX2 glutaredoxin (thioltransferase) 2); GRX2; CGI-133;

Gene ID 51022

mRNA Refseq NM_001243399

Protein Refseq NP_001230328

MIM 606820

UniProt ID Q9NS18

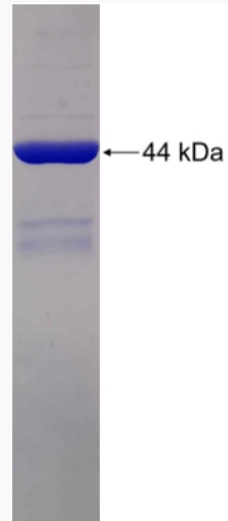
 Tel: 1-631-559-9269 1-516-512-3133

 Email: info@creative-biomart.com  Fax: 1-631-938-8127

 45-1 Ramsey Road, Shirley, NY 11967, USA



SDS-PAGE



Tel: 1-631-559-9269 1-516-512-3133

Email: info@creative-biomart.com Fax: 1-631-938-8127

45-1 Ramsey Road, Shirley, NY 11967, USA