

Recombinant Full Length Human GLRX3 Protein, C-Flag-tagged

Cat. No. GLRX3-1401HFL **Lot. No.** (See product label)

SPECIFICATION

Product Overview	Recombinant Full Length Human GLRX3 Protein, fused to Flag-tag at C-terminus, was expressed in Mammalian cells.
Species	Human
Source	Mammalian Cells
Description	This gene encodes a member of the glutaredoxin family. Glutaredoxins are oxidoreductase enzymes that reduce a variety of substrates using glutathione as a cofactor. The encoded protein binds to and modulates the function of protein kinase C theta. The encoded protein may also inhibit apoptosis and play a role in cellular growth, and the expression of this gene may be a marker for cancer. Pseudogenes of this gene are located on the short arm of chromosomes 6 and 9. Alternatively spliced transcript variants have been observed for this gene.
Form	25 mM Tris HCl, pH 7.3, 100 mM glycine, 10% glycerol.
Molecular Mass	37.3 kDa
AA Sequence	MAAGAAEAAVAAVEEVGSAGQFEELLRLKAKSLLVVHFWAPWAPQCAQMNEVMAE LAKELPQVSFVKLEA EGVPEVSEKYEISSVPTFLFFKNSQKIDRLDGAHAPELTKKVQ RHASSGSFLPSANEHLKEDLNLRLKKL THAAPCMLFMKGTPEPRCGFSKQMVEIL HKHNIQFSSFDIFSDEEVRQGLKAYSSWPTYQLYVSGELI GGLDIIKELEASEELDTI CPKAPKLEERLKVLTNKASVMLFMKGNKQEAKCGFSKQILEILNSTGVEYET

 Tel: 1-631-559-9269 1-516-512-3133

 Email: info@creative-biomart.com  Fax: 1-631-938-8127

 45-1 Ramsey Road, Shirley, NY 11967, USA

FDILEDEEVRQGLKAYSNWPTYPQLYVKGELVGGLDIVKELKENGELLPILRGENTRT
RPLEQKLISEEDLAANDILDYKDDDDKV

Purity > 80% as determined by SDS-PAGE and Coomassie blue staining.

Stability Stable for 12 months from the date of receipt of the product under proper storage and handling conditions. Avoid repeated freeze-thaw cycles.

Storage Store at -80 centigrade.

Concentration >50 ug/mL as determined by microplate BCA method.

Preparation Recombinant protein was captured through anti-DDK affinity column followed by conventional chromatography steps.

Protein Families Druggable Genome

Full Length Full L.

GENE INFORMATION

Gene Name [GLRX3 glutaredoxin 3 \[Homo sapiens \(human\) \]](#)

Official Symbol [GLRX3](#)

Synonyms GRX3; GRX4; GLRX4; PICOT; TXNL2; TXNL3

Gene ID [10539](#)

mRNA Refseq [NM_006541.5](#)

 Tel: 1-631-559-9269 1-516-512-3133

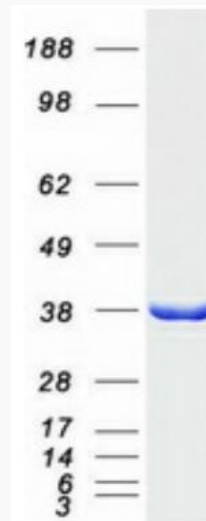
 Email: info@creative-biomart.com  Fax: 1-631-938-8127

 45-1 Ramsey Road, Shirley, NY 11967, USA

Protein Refseq NP_006532.2

MIM 612754

UniProt ID O76003



Coomassie blue staining of purified GLRX3 protein.

 Tel: 1-631-559-9269 1-516-512-3133

 Email: info@creative-biomart.com  Fax: 1-631-938-8127

 45-1 Ramsey Road, Shirley, NY 11967, USA