

Recombinant Human GLRX3 Protein, GST-tagged

Cat. No. GLRX3-4977H Lot. No. (See product label)

SPECIFICATION

Product Overview	Human GLRX3 full-length ORF (AAH05289, 1 a.a. - 335 a.a.) recombinant protein with GST-tag at N-terminal.
Species	Human
Source	Wheat Germ
Description	This gene encodes a member of the glutaredoxin family. Glutaredoxins are oxidoreductase enzymes that reduce a variety of substrates using glutathione as a cofactor. The encoded protein binds to and modulates the function of protein kinase C theta. The encoded protein may also inhibit apoptosis and play a role in cellular growth, and the expression of this gene may be a marker for cancer. Pseudogenes of this gene are located on the short arm of chromosomes 6 and 9. Alternatively spliced transcript variants have been observed for this gene. [provided by RefSeq, Dec 2010]
Molecular Mass	62.59 kDa
AA Sequence	MAAGAAEA AVAAVEEVGSAGQFEELLRLKAKSLLVHFWAPWAPQCAQMNEVMAE LAKELPQVSVFKLEAEGVPEVSEKEYEISSVPTFLFFKNSQKIDRLDGAHAPELTKKVQ RHASSGSFLPSANEHLKEDLNLRLKKLTHAAPCMLFMKGTPQEPRCGFSKQMVEIL HKHNIQFSSFDIFSDEEVRQGLKAYSSWPTYQPLYVSGELIGGLDIIKELEASEELDTI CPKAPKLEERLKVLTNKASVMLFMKGNKQEAACGFSKQILEILNSTGVEYETFDILED EEVRQGLKAYSNWPTYQPLYVKGELVGGGLDIVKELKENGELLPILRGEN
Applications	Enzyme-linked Immunoabsorbent Assay

 Tel: 1-631-559-9269 1-516-512-3133

 Email: info@creative-biomart.com  Fax: 1-631-938-8127

 45-1 Ramsey Road, Shirley, NY 11967, USA

Western Blot (Recombinant protein)
 Antibody Production
 Protein Array

Notes	Best use within three months from the date of receipt of this protein.
Storage	Store at -80 centigrade. Aliquot to avoid repeated freezing and thawing.
Storage Buffer	50 mM Tris-HCl, 10 mM reduced Glutathione, pH=8.0 in the elution buffer.

GENE INFORMATION

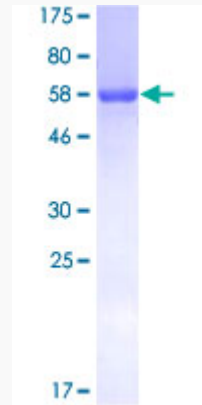
Gene Name	GLRX3 glutaredoxin 3 [Homo sapiens]
Official Symbol	GLRX3
Synonyms	GLRX3; glutaredoxin 3; thioredoxin like 2, TXNL2; glutaredoxin-3; bA500G10.4; GLRX4; glutaredoxin 4; GRX3; GRX4; PICOT; PKCq-interacting protein; thioredoxin-like protein 2; PKC-theta-interacting protein; PKC-interacting cousin of thioredoxin; TXNL2; TXNL3; FLJ11864;
Gene ID	10539
mRNA Refseq	NM_001199868
Protein Refseq	NP_001186797
MIM	612754
UniProt ID	O76003

 Tel: 1-631-559-9269 1-516-512-3133

 Email: info@creative-biomart.com  Fax: 1-631-938-8127

 45-1 Ramsey Road, Shirley, NY 11967, USA

**Quality Control
Testing**



12.5% SDS-PAGE Stained with Coomassie Blue.

 Tel: 1-631-559-9269 1-516-512-3133

 Email: info@creative-biomart.com  Fax: 1-631-938-8127

 45-1 Ramsey Road, Shirley, NY 11967, USA