

Recombinant Human GLRX3 Protein, Myc/DDK-tagged, C13 and N15-labeled

Cat. No. GLRX3-5073H Lot. No. (See product label)

SPECIFICATION

Product Overview	GLRX3 MS Standard C13 and N15-labeled recombinant protein (NP_006532) with a C-terminal MYC/DDK tag, was expressed in HEK293 cells.
Species	Human
Source	HEK293
Description	This gene encodes a member of the glutaredoxin family. Glutaredoxins are oxidoreductase enzymes that reduce a variety of substrates using glutathione as a cofactor. The encoded protein binds to and modulates the function of protein kinase C theta. The encoded protein may also inhibit apoptosis and play a role in cellular growth, and the expression of this gene may be a marker for cancer. Pseudogenes of this gene are located on the short arm of chromosomes 6 and 9. Alternatively spliced transcript variants have been observed for this gene.
Molecular Mass	37.4 kDa
AA Sequence	MAAGAAEA AVAAVEEVGSAGQFEELLRLKAKSLLVHFWAPWAPQCAQMNEVMAE LAKELPQVSFVKLEAEGVPEVSEKYEISSVPTFLFFKNSQKIDRLDGAHAPELTKKVQ RHASSGSFLPSANEHLKEDLNLRLLKLTAAAPCMLFMKGTPEPRCGFSKQMVEIL HKHNIQFSSFDIFSDEEVRQGLKAYSSWPTYPLQYVSGELIGGLDIIKELEASEELDTI CPKAPKLEERLKVLTNKASVLMFMKGNKQEAACGFSKQILEILNSTGVEYETFDILED EEVRQGLKAYSNWPTYPLQYVKGELVGGGLDIVKELKENGELLPILRGENTRTRPLEQ

 Tel: 1-631-559-9269 1-516-512-3133

 Email: info@creative-biomart.com  Fax: 1-631-938-8127

 45-1 Ramsey Road, Shirley, NY 11967, USA

KLISEEDLAANDILDYKDDDDKV

Purity > 80% as determined by SDS-PAGE and Coomassie blue staining

Stability Stable for 3 months from receipt of products under proper storage and handling conditions.

Storage Store at -80 centigrade. Avoid repeated freeze-thaw cycles.

Concentration 50 µg/mL as determined by BCA

Storage Buffer 100 mM glycine, 25 mM Tris-HCl, pH 7.3.

GENE INFORMATION

Gene Name [GLRX3 glutaredoxin 3 \[Homo sapiens \(human\) \]](#)

Official Symbol [GLRX3](#)

Synonyms GLRX3; glutaredoxin 3; thioredoxin like 2, TXNL2; glutaredoxin-3; bA500G10.4; GLRX4; glutaredoxin 4; GRX3; GRX4; PICOT; PKCq-interacting protein; thioredoxin-like protein 2; PKC-theta-interacting protein; PKC-interacting cousin of thioredoxin; TXNL2; TXNL3; FLJ11864;

Gene ID [10539](#)

mRNA Refseq [NM_006541](#)

Protein Refseq [NP_006532](#)

MIM [612754](#)

 Tel: 1-631-559-9269 1-516-512-3133

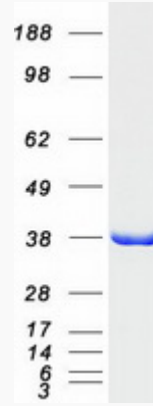
 Email: info@creative-biomart.com  Fax: 1-631-938-8127

 45-1 Ramsey Road, Shirley, NY 11967, USA

UniProt ID

O76003

SDS-PAGE



 Tel: 1-631-559-9269 1-516-512-3133

 Email: info@creative-biomart.com  Fax: 1-631-938-8127

 45-1 Ramsey Road, Shirley, NY 11967, USA