

## Recombinant Human GLRX5 Protein, GST-tagged

Cat. No. GLRX5-4978H Lot. No. (See product label)

### SPECIFICATION

<b>Product Overview</b>	Human GLRX5 full-length ORF ( NP_057501.2, 1 a.a. - 157 a.a.) recombinant protein with GST-tag at N-terminal.
<b>Species</b>	Human
<b>Source</b>	Wheat Germ
<b>Description</b>	This gene encodes a mitochondrial protein, which is evolutionarily conserved. It is involved in the biogenesis of iron-sulfur clusters, which are required for normal iron homeostasis. Mutations in this gene are associated with autosomal recessive pyridoxine-refractory sideroblastic anemia. [provided by RefSeq, May 2010]
<b>Molecular Mass</b>	43 kDa
<b>AA Sequence</b>	MSGSLGRAAAALLRWGRGAGGGGLWGPVRAAGSGAGGGGSAEQLDALVKKDK VVVFLKGTPEQPQCGFSNAVQILRLHGVRDYAAYNVLDDPELRQGQIKDYSNWPTIP QVYLNGEFVGGCDILLQMHQNGDLVEELKKLGIHSALLDEKKDQDSK
<b>Applications</b>	Enzyme-linked Immunoabsorbent Assay Western Blot (Recombinant protein) Antibody Production Protein Array
<b>Notes</b>	Best use within three months from the date of receipt of this protein.

 Tel: 1-631-559-9269 1-516-512-3133

 Email: [info@creative-biomart.com](mailto:info@creative-biomart.com)  Fax: 1-631-938-8127

 45-1 Ramsey Road, Shirley, NY 11967, USA

**Storage** Store at -80 centigrade. Aliquot to avoid repeated freezing and thawing.

**Storage Buffer** 50 mM Tris-HCl, 10 mM reduced Glutathione, pH=8.0 in the elution buffer.

## GENE INFORMATION

**Gene Name** [GLRX5 glutaredoxin 5 \[ Homo sapiens \]](#)

**Official Symbol** [GLRX5](#)

**Synonyms**

GLRX5; glutaredoxin 5; C14orf87, chromosome 14 open reading frame 87, glutaredoxin 5 homolog (*S. cerevisiae*); glutaredoxin-related protein 5, mitochondrial; GRX5; PR01238; glutaredoxin 5 homolog; monothiol glutaredoxin-5; FLB4739; PRO1238; C14orf87; MGC14129;

**Gene ID** [51218](#)

**mRNA Refseq** [NM\\_016417](#)

**Protein Refseq** [NP\\_057501](#)

**MIM** [609588](#)

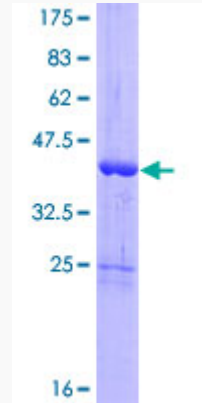
**UniProt ID** [Q86SX6](#)

 Tel: 1-631-559-9269 1-516-512-3133

 Email: [info@creative-biomart.com](mailto:info@creative-biomart.com)  Fax: 1-631-938-8127

 45-1 Ramsey Road, Shirley, NY 11967, USA

**Quality Control  
Testing**



12.5% SDS-PAGE Stained with Coomassie Blue.

 Tel: 1-631-559-9269 1-516-512-3133

 Email: [info@creative-biomart.com](mailto:info@creative-biomart.com)  Fax: 1-631-938-8127

 45-1 Ramsey Road, Shirley, NY 11967, USA