

Recombinant Human GLS protein, His-tagged

Cat. No. GLS-1608H **Lot. No.** (See product label)

SPECIFICATION

| | |
|-------------------------|---|
| Product Overview | Recombinant Human GLS protein (370-669aa) was fused to His-tag and expressed in E.coli. |
| Species | Human |
| Source | E.coli |
| ProteinLength | 370-669 a.a. |
| Description | This gene encodes the K-type mitochondrial glutaminase. The encoded protein is an phosphate-activated amidohydrolase that catalyzes the hydrolysis of glutamine to glutamate and ammonia. This protein is primarily expressed in the brain and kidney plays an essential role in generating energy for metabolism, synthesizing the brain neurotransmitter glutamate and maintaining acid-base balance in the kidney. Alternate splicing results in multiple transcript variants. |
| Form | The purified protein was Lyophilized from sterile PBS (58mM Na ₂ HPO ₄ , 17mM NaH ₂ PO ₄ , 68mM NaCl, pH7.4). 5% trehalose and 5% mannitol are added as protectants before lyophilization. |
| Molecular Mass | 35 kDa |
| AA Sequence | YVGFSNATFQSERESGDRNFAIGYYLKEKKCFPEGTDMVGILDYFQLCSIEVTCS ASVMAATLANGGFCPITGERVLSPEAVRNTLSLMHSCGMYDFSGQFAFHVGLPAKS GVAGGILLVVPNVMMCMWSPPLDKMGNSVKGIHFCHDLVSLCNFHNYDNLRHFA |

 Tel: 1-631-559-9269 1-516-512-3133

 Email: info@creative-biomart.com  Fax: 1-631-938-8127

 45-1 Ramsey Road, Shirley, NY 11967, USA

KKLDPRREGGDQRVKSVINLLFAAYTGDVSALRRFALSAMDMEQRDYDSRTALHVA
AAEGHVEVVKFLEACKVNPFPKDRWNNTPM

Purity 90%, by SDS-PAGE with Coomassie Brilliant Blue staining.

Storage Store for up to 12 months at -20 to -80 centigrade as lyophilized powder. Short-term storage: Store at 2-8 centigrade for (1-2 weeks). Long-term storage: Aliquot and store at -20 to -80 centigrade for up to 3 months, buffer containing 50% glycerol is recommended for reconstitution. Avoid repeat freeze-thaw cycles.

Reconstitution Reconstitute at 0.25 g/μl in 200 μl sterile water for short-term storage. Reconstitution with 200 μl 50% glycerol solution is recommended for longer term storage. If a different concentration is needed for your purposes please adjust the reconstitution

Shipping The product is shipped at ambient temperature. Upon receipt, store it immediately at the recommended temperature.

GENE INFORMATION

Gene Name GLS

Official Symbol GLS

Synonyms GAC; GAM; KGA; GLS1; AAD20; GDPAG; CASGID; EIEE71

Gene ID 2744

mRNA Refseq NM_014905.5

 Tel: 1-631-559-9269 1-516-512-3133

 Email: info@creative-biomart.com  Fax: 1-631-938-8127

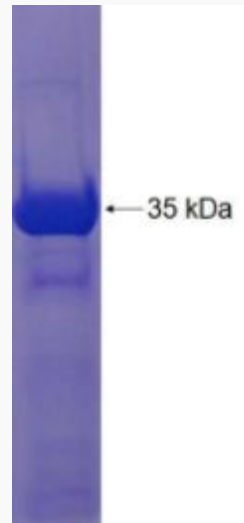
 45-1 Ramsey Road, Shirley, NY 11967, USA

Protein Refseq NP_055720.3

MIM 138280

UniProt ID O94925

SDS-PAGE of GLS-1608H



 Tel: 1-631-559-9269 1-516-512-3133

 Email: info@creative-biomart.com  Fax: 1-631-938-8127

 45-1 Ramsey Road, Shirley, NY 11967, USA