

# Recombinant Full Length Human GLS Protein

**Cat. No.** GLS-270HFL    **Lot. No.** (See product label)

## SPECIFICATION

<b>Product Overview</b>	Recombinant Full Length Human GLS Protein, fused to Flag-tag at C-terminus, was expressed in Mammalian cells.
<b>Species</b>	Human
<b>Source</b>	Mammalian Cells
<b>ProteinLength</b>	1-669 a.a.
<b>Description</b>	This gene encodes the K-type mitochondrial glutaminase. The encoded protein is an phosphate-activated amidohydrolase that catalyzes the hydrolysis of glutamine to glutamate and ammonia. This protein is primarily expressed in the brain and kidney plays an essential role in generating energy for metabolism, synthesizing the brain neurotransmitter glutamate and maintaining acid-base balance in the kidney. Alternate splicing results in multiple transcript variants.
<b>Form</b>	25 mM Tris HCl, pH 7.3, 100 mM glycine, 10% glycerol.
<b>Molecular Mass</b>	73.3 kDa
<b>AA Sequence</b>	MMRLRGSGMLRDLLLRSPAGVSATLRRRAQPLVTLCCRPRGGGRPAAGPAAAARLH PWWGGGGWPAEPLAR GLSSSPSEILQELGKGSTHPQPGVSPPAAPAAPGPKDGP GETDAFGNSEGKELVASGENKIKQGLLPSLE DLLFYTIAEGQEKIPVHKFITALKSTG LRTSDPRLKECMDMLRRTLQTTSDGVMLDKDLFKKCVQSNIVL LTQAFRRKFVIPDF MSFTSHIDELYESAkkQSGGKVADYIPQLAKFSPDLWGVSVCTVDGQRHSTGDTKV

 Tel: 1-631-559-9269    1-516-512-3133

 Email: [info@creative-biomart.com](mailto:info@creative-biomart.com)     Fax: 1-631-938-8127

 45-1 Ramsey Road, Shirley, NY 11967, USA

PFCLQSCVKPLKYAIAVNDLGTEYVHRYVGKEPSGLRFNKLFLNEDDKPHNPMVNA  
 GAIVVTSLIKQGVN NAEKFDYVMQFLNKMAGNEYVGFSNATFQSERESGDRNFAIG  
 YYLKEKKCFPEGTDMVGILDFYFQLCSI EVTCEASVMAATLANGGFPCITGERVLS  
 PEAVRNTLSLMHSCGMYDFSGQFAFHVGLPAKSGVAGGILL VVPNVMGMMCWSP  
 PLDKMGNSVKGIHFCHDLVSLCNFHNYDNLRFHFAKKLDPREGGDQQRVKSVINLLF  
 A AYTGDVVSALRRFALSAMDMEQRDYDSRTALHVAEEGHVEVVKFLEACKVNPFF  
 PKDRWNNTPMDEALHF  
 GHHDVFKILQEYQVQYTPQGSDNGKENQTVHKNLDGLLSGPTRTRRLEQKLISEE  
 DLAANDILDYKDDDDKV

<b>Purity</b>	> 80% as determined by SDS-PAGE and Coomassie blue staining.
<b>Stability</b>	Stable for 12 months from the date of receipt of the product under proper storage and handling conditions. Avoid repeated freeze-thaw cycles.
<b>Storage</b>	Store at -80 centigrade.
<b>Concentration</b>	>50 ug/mL as determined by microplate BCA method.
<b>Preparation</b>	Recombinant protein was captured through anti-DDK affinity column followed by conventional chromatography steps.
<b>Protein Pathways</b>	Alanine, aspartate and glutamate metabolism, Arginine and proline metabolism, D-Glutamine and D-glutamate metabolism, Metabolic pathways, Nitrogen metabolism
<b>Full Length</b>	Full L.

## GENE INFORMATION

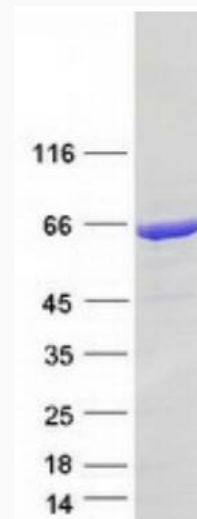
**Gene Name** [GLS glutaminase \[ Homo sapiens \(human\) \]](#)

 Tel: 1-631-559-9269 1-516-512-3133

 Email: [info@creative-biomart.com](mailto:info@creative-biomart.com)  Fax: 1-631-938-8127

 45-1 Ramsey Road, Shirley, NY 11967, USA

<b>Official Symbol</b>	GLS
<b>Synonyms</b>	GAC; GAM; KGA; GLS1; AAD20; DEE71; GDPAG; CASGID; EIEE71
<b>Gene ID</b>	2744
<b>mRNA Refseq</b>	NM_014905.5
<b>Protein Refseq</b>	NP_055720.3
<b>MIM</b>	138280
<b>UniProt ID</b>	O94925



Coomassie blue staining of purified GLS protein.

 Tel: 1-631-559-9269 1-516-512-3133

 Email: [info@creative-biomart.com](mailto:info@creative-biomart.com)  Fax: 1-631-938-8127

 45-1 Ramsey Road, Shirley, NY 11967, USA