

# Recombinant Human GLS Protein (Ile221-Leu533), N-His tagged

**Cat. No.** GLS-2954H    **Lot. No.** (See product label)

## SPECIFICATION

<b>Product Overview</b>	Recombinant human GLS (Ile221-Leu533) protein fused with the N-His tag was expressed in E. coli.
<b>Species</b>	Human
<b>Source</b>	E.coli
<b>ProteinLength</b>	Ile221-Leu533
<b>Molecular Mass</b>	36.75 kDa
<b>Purity</b>	>90 % as determined by SDS-PAGE.
<b>Notes</b>	For research use only.
<b>Storage</b>	Use a manual defrost freezer and avoid repeated freeze thaw cycles. Store at 2 to 8 centigrade for one week. Store at -20 to -80 centigrade for twelve months from the date of receipt.
<b>Storage Buffer</b>	0.01M PBS, pH 7.4, 0.02 % NLS
<b>Reconstitution</b>	Reconstitute in sterile water for a stock solution.
<b>Shipping</b>	In general, proteins are provided as lyophilized powder/frozen liquid. They are

 Tel: 1-631-559-9269    1-516-512-3133

 Email: [info@creative-biomart.com](mailto:info@creative-biomart.com)     Fax: 1-631-938-8127

 45-1 Ramsey Road, Shirley, NY 11967, USA

shipped out with dry ice/blue ice unless customers require otherwise.

## GENE INFORMATION

**Gene Name** GLS glutaminase [ Homo sapiens (human) ]

**Official Symbol** GLS

**Synonyms** GLS; glutaminase; glutaminase kidney isoform, mitochondrial; GLS1; KIAA0838; K-glutaminase; glutaminase C; L-glutamine amidohydrolase; glutaminase, phosphate-activated; GAC; GAM; KGA; AAD20; FLJ10358; FLJ41499; DKFZp686D14231; DKFZp686O15119;

**Gene ID** 2744

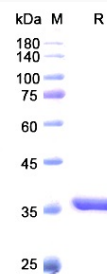
**mRNA Refseq** NM\_001256310

**Protein Refseq** NP\_001243239

**MIM** 138280

**UniProt ID** O94925

## SDS-PAGE



Tel: 1-631-559-9269 1-516-512-3133

Email: [info@creative-biomart.com](mailto:info@creative-biomart.com) Fax: 1-631-938-8127

45-1 Ramsey Road, Shirley, NY 11967, USA