

Recombinant Human GLS Protein, GST-tagged

Cat. No. GLS-4979H Lot. No. (See product label)

SPECIFICATION

| | |
|-------------------------|----------------------------------------------------------------------------------------------------------------------------------------------------------------------------------------------------------------------------------------------------------------------------------------------------------------------------------------------------------------------------------------------------------------------------------------------------------------------------------------------------------------------------------------------------------------------------|
| Product Overview | Human GLS partial ORF (NP_055720, 580 a.a. - 669 a.a.) recombinant protein with GST-tag at N-terminal. |
| Species | Human |
| Source | Wheat Germ |
| Description | Sahai (1983) [PubMed 6825316] demonstrated phosphate-activated glutaminase (EC 3.5.1.2) in human platelets. It is the major enzyme yielding glutamate from glutamine. Significance of the enzyme derives from its possible implication in behavior disturbances in which glutamate acts as a neurotransmitter (Prusiner, 1981). High heritability of platelet glutaminase was indicated by studies of Sahai and Vogel (1983) [PubMed 6682827] who found an intraclass correlation coefficient of 0.96 for monozygotic twins and 0.53 for dizygotic twins.[supplied by OMIM |
| Molecular Mass | 35.64 kDa |
| AA Sequence | EQRDYDSRTALHVA AAE GHVEVVKFLLEACKVNPFPKDRWNNTPMDEALHFGHHD VFKILQEYQVQYTPQGSDNGKENQTVHKNL DGLL |
| Applications | Enzyme-linked Immunoabsorbent Assay Western Blot (Recombinant protein) Antibody Production Protein Array |

 Tel: 1-631-559-9269 1-516-512-3133

 Email: info@creative-biomart.com  Fax: 1-631-938-8127

 45-1 Ramsey Road, Shirley, NY 11967, USA

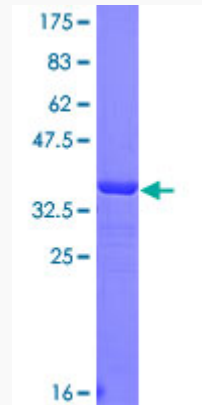
| | |
|-------------------------|----------------------------------------------------------------------------------------------------------------------------------------------------------------------------------------------------------------------------------------------------|
| Notes | Best use within three months from the date of receipt of this protein. |
| Storage | Store at -80 centigrade. Aliquot to avoid repeated freezing and thawing. |
| Storage Buffer | 50 mM Tris-HCl, 10 mM reduced Glutathione, pH=8.0 in the elution buffer. |
| GENE INFORMATION | |
| Gene Name | GLS glutaminase [Homo sapiens] |
| Official Symbol | GLS |
| Synonyms | GLS; glutaminase; glutaminase kidney isoform, mitochondrial; GLS1; KIAA0838; K-glutaminase; glutaminase C; L-glutamine amidohydrolase; glutaminase, phosphate-activated; GAC; GAM; KGA; AAD20; FLJ10358; FLJ41499; DKFZp686D14231; DKFZp686O15119; |
| Gene ID | 2744 |
| mRNA Refseq | NM_001256310 |
| Protein Refseq | NP_001243239 |
| MIM | 138280 |
| UniProt ID | O94925 |

 Tel: 1-631-559-9269 1-516-512-3133

 Email: info@creative-biomart.com  Fax: 1-631-938-8127

 45-1 Ramsey Road, Shirley, NY 11967, USA

**Quality Control
Testing**



12.5% SDS-PAGE Stained with Coomassie Blue.

 Tel: 1-631-559-9269 1-516-512-3133

 Email: info@creative-biomart.com  Fax: 1-631-938-8127

 45-1 Ramsey Road, Shirley, NY 11967, USA