

Recombinant Human GLS Protein, Myc/DDK-tagged, C13 and N15-labeled

Cat. No. GLS-6588H **Lot. No.** (See product label)

SPECIFICATION

Product Overview

GLS MS Standard C13 and N15-labeled recombinant protein (NP_055720) with a C-terminal MYC/DDK tag, was expressed in HEK293 cells.

Species

Human

Source

HEK293

Description

This gene encodes the K-type mitochondrial glutaminase. The encoded protein is an phosphate-activated amidohydrolase that catalyzes the hydrolysis of glutamine to glutamate and ammonia. This protein is primarily expressed in the brain and kidney plays an essential role in generating energy for metabolism, synthesizing the brain neurotransmitter glutamate and maintaining acid-base balance in the kidney. Alternate splicing results in multiple transcript variants.

Molecular Mass

73.3 kDa

AA Sequence

```
MMRLRGSGMLRDLLLLRSPAGVSATLRRRAQPLVTLCCRPRGGGRPAAGPAAAARLH
PWWGGGGWPAEPLARGLSSSPSEILQELGKGSTHPQPGVSPPAAPAAPGPKDGP
GETDAFGNSEGKELVASGENKIKQGLLPSLEDLLFYTIAEGQEKIPVHKFITALKSTGL
RTSDPRLKECMDMLRLTLQTTSDGVMLDKDLFKKCVQSNIVLLTQAFRRKFVIPDFM
SFTSHIDELYESAKKQSGGKVADYIPQLAKFSPDLWGVSVCTVDGQRHSTGDTKVP
FCLQSCVKPLKYAIAVNDLGTEYVHRYVVGKEPSGLRFNKLFLNEDDKPHNPMVNAG
AIVVTSLIKQGVNNAEKFDYVMQFLNKMAGNEYVGFSNATFQSERESGDRNFAIGYY
```

 Tel: 1-631-559-9269 1-516-512-3133

 Email: info@creative-biomart.com  Fax: 1-631-938-8127

 45-1 Ramsey Road, Shirley, NY 11967, USA

LKEKKCFPEGTDMVGILDFYFQLCSIEVTCESASVMAATLANGGFCPITGERVLSPEA
 VRNTLSLMHSCGMDFSGQFAFHVGLPAKSGVAGGILLVVPNVMMCMCWSPPLDK
 MGNSVKGIFCHDLVSLCNFHNYDNLRHFAKKLDPRREGGDQRVKSVINLLFAAYT
 GDVSALRRFALSAMDMEQRDYDSRTALHVAAAEGHVEVVKFLEACKVNPFPKDR
 WNNTPMDEALHFGHHDVFKILQEYQVQYTPQGSDNGKENQTVHKNLDGLLSGPT
 RTRRLEQKLISEEDLAANDILDYKDDDDKV

Purity	> 80% as determined by SDS-PAGE and Coomassie blue staining
Stability	Stable for 3 months from receipt of products under proper storage and handling conditions.
Storage	Store at -80 centigrade. Avoid repeated freeze-thaw cycles.
Concentration	50 µg/mL as determined by BCA
Storage Buffer	100 mM glycine, 25 mM Tris-HCl, pH 7.3.

GENE INFORMATION

Gene Name	GLS glutaminase [Homo sapiens (human)]
Official Symbol	GLS
Synonyms	GLS; glutaminase; glutaminase kidney isoform, mitochondrial; GLS1; KIAA0838; K-glutaminase; glutaminase C; L-glutamine amidohydrolase; glutaminase, phosphate-activated; GAC; GAM; KGA; AAD20; FLJ10358; FLJ41499; DKFZp686D14231; DKFZp686O15119;
Gene ID	2744

 Tel: 1-631-559-9269 1-516-512-3133

 Email: info@creative-biomart.com  Fax: 1-631-938-8127

 45-1 Ramsey Road, Shirley, NY 11967, USA

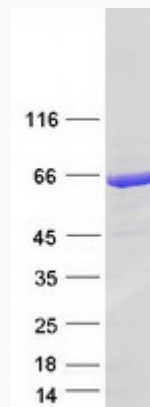
mRNA Refseq [NM_014905](#)

Protein Refseq [NP_055720](#)

MIM [138280](#)

UniProt ID [O94925](#)

SDS-PAGE



 Tel: 1-631-559-9269 1-516-512-3133

 Email: info@creative-biomart.com  Fax: 1-631-938-8127

 45-1 Ramsey Road, Shirley, NY 11967, USA