

Recombinant Human GLT1D1 Protein, His tagged

Cat. No. GLT1D1-001H Lot. No. (See product label)

SPECIFICATION

Product Overview	Recombinant Human GLT1D1 Protein (V17-D346 aa) with His tag was expressed in E.coli.
Species	Human
Source	E.coli
ProteinLength	17-346 aa
Description	Predicted to enable glycosyltransferase activity. Located in cytosol.
Form	Sterile PBS, pH7.4, 10% Glycerol, 8% Trehalose
Molecular Mass	38 kDa
AASequence	MHHHHHHHHHHVTAQRVRAHLEAAGHVCVLKDAFD FESRSEIANLILAENCEAALAL HLYRGGRLQLQGHRIPIFGVIFGGTDVNEDANQAEKNTVMGRVLEEARFAVAFTESMK EMAQAQWPHAKGKVYVQSQGIATTPNAAFNWNTFLQRSEINQSADNLHIFLLICGLR QVKDPLYLVDAFSAWHQEENPVHLVIVGPEVDPVFTREVKAKVKRAAGVRLIGEMP QEDLHAVVKNCFAVNSSVSEGMSAAILEAMDLEVPVLARNIPGNAAVVKHEVTGLL FSNPQEFVHLAKRLVSDPALEKEIVVNGREYVRMYHSWQVERDTYQQLIRKLEGST ED
Endotoxin	<1 EU/μg by LAL

 Tel: 1-631-559-9269 1-516-512-3133

 Email: info@creative-biomart.com  Fax: 1-631-938-8127

 45-1 Ramsey Road, Shirley, NY 11967, USA

Purity >90% by SDS-PAGE

Storage

Store it under sterile conditions at -20 to -80 centigrade. It is recommended that the protein be aliquoted for optimal storage. Avoid repeated freeze-thaw cycles.

Concentration 1 mg/mL by BCA

GENE INFORMATION

Gene Name GLT1D1 glycosyltransferase 1 domain containing 1 [Homo sapiens (human)]

Official Symbol GLT1D1

Synonyms

GLT1D1; glycosyltransferase 1 domain containing 1; glycosyltransferase 1 domain-containing protein 1; EC 2.4.-.-

Gene ID 144423

mRNA Refseq NM_144669

Protein Refseq NP_653270

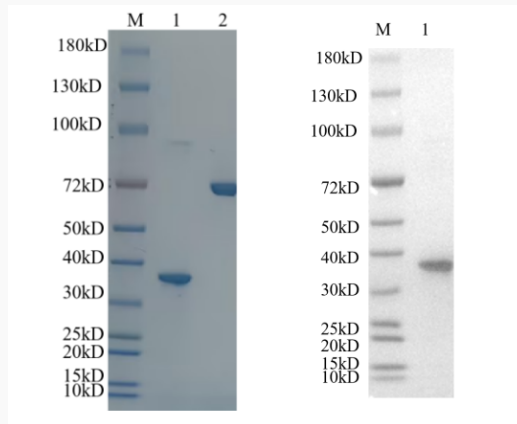
UniProt ID Q96MS3

 Tel: 1-631-559-9269 1-516-512-3133

 Email: info@creative-biomart.com  Fax: 1-631-938-8127

 45-1 Ramsey Road, Shirley, NY 11967, USA

SDS-PAGE and WB



Reducing 4%-20% SDS-PAGE (CBB stained) and WB (Anti-His Mouse Monoclonal antibody) analysis profiles of purified GLT1D1. 1. GLT1D1: 1 μ g 2. BSA: 1 μ g

 Tel: 1-631-559-9269 1-516-512-3133

 Email: info@creative-biomart.com  Fax: 1-631-938-8127

 45-1 Ramsey Road, Shirley, NY 11967, USA