

Recombinant Human GLT1D1 Protein, GST-tagged

Cat. No. GLT1D1-4982H Lot. No. (See product label)

SPECIFICATION

Product Overview	Human GLT1D1 full-length ORF (NP_653270.1, 1 a.a. - 266 a.a.) recombinant protein with GST-tag at N-terminal.
Species	Human
Source	Wheat Germ
Description	GLT1D1 (Glycosyltransferase 1 Domain Containing 1) is a Protein Coding gene. GO annotations related to this gene include transferase activity, transferring glycosyl groups.
Molecular Mass	55.9 kDa
AA Sequence	MRLFLAVLRPHTGNAVTAQRVRAHLEAAGHVCVLKDAFDFESRSEIANLILAENCE AALALHLYRGGRLQLQGHRIPIFGVIFGGTDVNEDANQAEKNTVMGRVLEEERFAVAFT ESMKEMAQAQWVDPVFTREVKAKVKRAAGVRLIGEMPQEDLHAVVKNCFAVVNSS VSEGMSAAILEAMDLEVPVLARNIPGNAAVVKHEVTGLLFSNPQEFVHLAKRLVSDP ALEKEIVVNGREYVRMYHSWQVERDTYQQLIRKLEGSTED
Applications	Enzyme-linked Immunoabsorbent Assay Western Blot (Recombinant protein) Antibody Production Protein Array
Notes	Best use within three months from the date of receipt of this protein.

 Tel: 1-631-559-9269 1-516-512-3133

 Email: info@creative-biomart.com  Fax: 1-631-938-8127

 45-1 Ramsey Road, Shirley, NY 11967, USA

Storage Store at -80 centigrade. Aliquot to avoid repeated freezing and thawing.

Storage Buffer 50 mM Tris-HCl, 10 mM reduced Glutathione, pH=8.0 in the elution buffer.

GENE INFORMATION

Gene Name GLT1D1 glycosyltransferase 1 domain containing 1 [Homo sapiens]

Official Symbol GLT1D1

Synonyms GLT1D1; glycosyltransferase 1 domain containing 1; glycosyltransferase 1 domain-containing protein 1; FLJ31978;

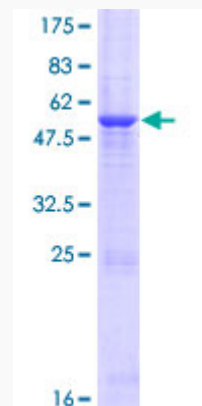
Gene ID 144423

mRNA Refseq NM_144669

Protein Refseq NP_653270

UniProt ID Q96MS3

Quality Control Testing



 Tel: 1-631-559-9269 1-516-512-3133

 Email: info@creative-biomart.com  Fax: 1-631-938-8127

 45-1 Ramsey Road, Shirley, NY 11967, USA



12.5% SDS-PAGE Stained with Coomassie Blue.

 Tel: 1-631-559-9269 1-516-512-3133

 Email: info@creative-biomart.com  Fax: 1-631-938-8127

 45-1 Ramsey Road, Shirley, NY 11967, USA