

## Recombinant Human GLT8D2 Protein, GST-tagged

**Cat. No.** GLT8D2-4985H    **Lot. No.** (See product label)

### SPECIFICATION

<b>Product Overview</b>	Human GLT8D2 full-length ORF ( NP_112592.1, 1 a.a. - 349 a.a.) recombinant protein with GST-tag at N-terminal.
<b>Species</b>	Human
<b>Source</b>	Wheat Germ
<b>Description</b>	GLT8D2 (Glycosyltransferase 8 Domain Containing 2) is a Protein Coding gene. GO annotations related to this gene include transferase activity, transferring glycosyl groups. An important paralog of this gene is GLT8D1.
<b>Molecular Mass</b>	66.4 kDa
<b>AA Sequence</b>	MALLRKINQVLLFLLIVTLCVILYKKVHKGTVPKNDADDESETPEELEEIPVVICAAAG RMGATMAAINSISNTDANILFYVGLRNTLTRIRKWIEHSLREINFKIVEFNPMVLK GKIRPDSSRPELLQPLNFVRFYLPPLIHQHEKVIYLDLDDVIVQGGDIQELYDTTLALGHA AAFSDDCDLPSAQDINRLVGLQNTYMGYLDYRKKAIKDLGISPSTCSFNPGVIVANM TEWKHQIRITKQLEKWMQKNVEENLYSSSLGGGVATSPMLIVFHGKYSTINPLWHIR HLGWNPDARYSEHFLQEAKLLHWNGRHKPWDFPSVHNDLWESWVFPDPAGIFKL NHHS
<b>Applications</b>	Enzyme-linked Immunoabsorbent Assay Western Blot (Recombinant protein) Antibody Production Protein Array

 Tel: 1-631-559-9269    1-516-512-3133

 Email: [info@creative-biomart.com](mailto:info@creative-biomart.com)     Fax: 1-631-938-8127

 45-1 Ramsey Road, Shirley, NY 11967, USA

<b>Notes</b>	Best use within three months from the date of receipt of this protein.
<b>Storage</b>	Store at -80 centigrade. Aliquot to avoid repeated freezing and thawing.
<b>Storage Buffer</b>	50 mM Tris-HCl, 10 mM reduced Glutathione, pH=8.0 in the elution buffer.

## GENE INFORMATION

<b>Gene Name</b>	GLT8D2 glycosyltransferase 8 domain containing 2 [ Homo sapiens ]
<b>Official Symbol</b>	GLT8D2
<b>Synonyms</b>	GLT8D2; glycosyltransferase 8 domain containing 2; Glycosyltransferase 8 Domain Containing 2; EC 2.4.1.-; EC 2.4.1; GALA4A
<b>Gene ID</b>	83468
<b>mRNA Refseq</b>	NM_031302
<b>Protein Refseq</b>	NP_112592
<b>UniProt ID</b>	Q9H1C3

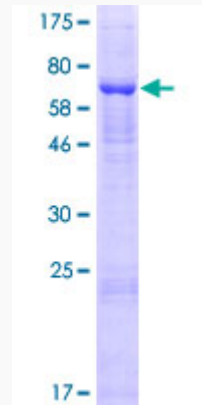
 Tel: 1-631-559-9269 1-516-512-3133

 Email: [info@creative-biomart.com](mailto:info@creative-biomart.com)  Fax: 1-631-938-8127

 45-1 Ramsey Road, Shirley, NY 11967, USA



**Quality Control  
Testing**



12.5% SDS-PAGE Stained with Coomassie Blue.

Tel: 1-631-559-9269 1-516-512-3133

Email: [info@creative-biomart.com](mailto:info@creative-biomart.com) Fax: 1-631-938-8127

45-1 Ramsey Road, Shirley, NY 11967, USA