

## Recombinant Human GLT8D2 Protein (25-349 aa), His-tagged

Cat. No. GLT8D2-527H Lot. No. (See product label)

### SPECIFICATION

<b>Product Overview</b>	Recombinant Human GLT8D2 Protein (25-349 aa) is produced by E. coli expression system. This protein is fused with a 6xHis tag at the N-terminal. Research Area: Metabolism. Protein Description: Full Length of Mature Protein.
<b>Species</b>	Human
<b>Source</b>	E.coli
<b>ProteinLength</b>	25-349 aa
<b>Form</b>	Tris-based buffer, 50% glycerol
<b>Molecular Mass</b>	41.2 kDa
<b>AA Sequence</b>	KKVHKGTVPKNDADDESETPEELEEIPVVICAAAGRMGATMAAINSISNTDANILF YVVGLRNTLTRIRKWIEHSLKREINFKIVEFNPMVLKKGKIRPDSSRPELLQPLNFVRFY LPLLIHQHEKVYLDLDDVIVQGDIQELYDTTLALGHAAAFSDDCDLPSAQDINRLVGLQ NTYMGYLDYRKKAIKDLGISPSTCSFNPGVIVANMTEWKHQIRITKQLEKWMQKNVE ENLYSSSLGGGVATSPMLIVFHGKYSTINPLWHIRHLGWNPDARYSEHFLQEAKLLH WNGRHKPWDFPSVHNDLWESWFVDPAGIFKLNHHS
<b>Purity</b>	> 90% as determined by SDS-PAGE.
<b>Notes</b>	Repeated freezing and thawing is not recommended. Store working aliquots at 4 centigrade for up to one week.

 Tel: 1-631-559-9269 1-516-512-3133

 Email: [info@creative-biomart.com](mailto:info@creative-biomart.com)  Fax: 1-631-938-8127

 45-1 Ramsey Road, Shirley, NY 11967, USA

**Storage**

The shelf life is related to many factors, storage state, buffer ingredients, storage temperature and the stability of the protein itself. Generally, the shelf life of liquid form is 6 months at -20 centigrade/-80 centigrade. The shelf life of lyophilized form is 12 months at -20 centigrade/-80 centigrade.

**Concentration**

A hardcopy of COA with concentration instruction is sent along with the products.

## GENE INFORMATION

**Gene Name**

GLT8D2 glycosyltransferase 8 domain containing 2 [ Homo sapiens ]

**Official Symbol**

GLT8D2

**Gene ID**

83468

**mRNA Refseq**

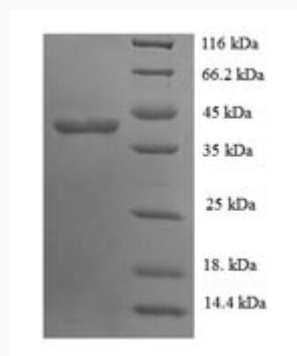
NM\_031302.3

**Protein Refseq**

NP\_112592.1

**UniProt ID**

Q9H1C3



(Tris-Glycine gel) Discontinuous SDS-PAGE (reduced) with 5% enrichment gel and

 Tel: 1-631-559-9269 1-516-512-3133

 Email: [info@creative-biomart.com](mailto:info@creative-biomart.com)  Fax: 1-631-938-8127

 45-1 Ramsey Road, Shirley, NY 11967, USA



15% separation gel.

 Tel: 1-631-559-9269 1-516-512-3133

 Email: [info@creative-biomart.com](mailto:info@creative-biomart.com)  Fax: 1-631-938-8127

 45-1 Ramsey Road, Shirley, NY 11967, USA