

Recombinant Human GLT8D2 Protein, Myc/DDK-tagged, C13 and N15-labeled

Cat. No. GLT8D2-6372H **Lot. No.** (See product label)

SPECIFICATION

Product Overview	GLT8D2 MS Standard C13 and N15-labeled recombinant protein (NP_112592) with a C-terminal MYC/DDK tag, was expressed in HEK293 cells.
Species	Human
Source	HEK293
Description	GLT8D2 (Glycosyltransferase 8 Domain Containing 2) is a Protein Coding gene. Gene Ontology (GO) annotations related to this gene include transferase activity, transferring glycosyl groups. An important paralog of this gene is GLT8D1.
Molecular Mass	40 kDa
AA Sequence	MALLRKINQVLLFLLIVTLCVILYKKVHKGTVPKNDADDESETPEELEEIPVVICAAAG RMGATMAAINSISNTDANILFYVVGLRNLTTRIRKWIEHSKLREINFKIVEFNPMVLK GKIRPDSSRPELLQPLNFVRFYLPPLIHQHEKVIYLDLDDVIVQGGDIQELYDTTLALGHA AAFSDDCDLPSAQDINRLVGLQNTYMGYLDYRKKAIKDLGISPSTCSFNPGVIVANM TEWKHQIRITKQLEKWMQKNVEENLYSSSLGGGVATSPMLIVFHGKYSTINPLWHIR HLGWNPDARYSEHFLQEAKLLHWNGRHKPWDFPSVHNDLWESWFVPDPAGIFKL NHHSTRTRPLEQKLISEEDLAANDILDYKDDDDKV
Purity	> 80% as determined by SDS-PAGE and Coomassie blue staining
Stability	Stable for 3 months from receipt of products under proper storage and handling

 Tel: 1-631-559-9269 1-516-512-3133

 Email: info@creative-biomart.com  Fax: 1-631-938-8127

 45-1 Ramsey Road, Shirley, NY 11967, USA

conditions.

Storage Store at -80 centigrade. Avoid repeated freeze-thaw cycles.

Concentration 50 µg/mL as determined by BCA

Storage Buffer 100 mM glycine, 25 mM Tris-HCl, pH 7.3.

GENE INFORMATION

Gene Name GLT8D2 glycosyltransferase 8 domain containing 2 [Homo sapiens (human)]

Official Symbol GLT8D2

Synonyms GLT8D2; glycosyltransferase 8 domain containing 2; glycosyltransferase 8 domain-containing protein 2; EC 2.4.1.-

Gene ID 83468

mRNA Refseq NM_031302

Protein Refseq NP_112592

UniProt ID Q9H1C3

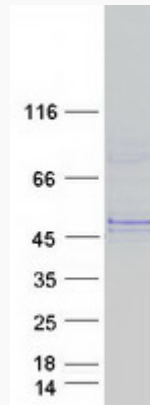
 Tel: 1-631-559-9269 1-516-512-3133

 Email: info@creative-biomart.com  Fax: 1-631-938-8127

 45-1 Ramsey Road, Shirley, NY 11967, USA



SDS-PAGE



Tel: 1-631-559-9269 1-516-512-3133

Email: info@creative-biomart.com Fax: 1-631-938-8127

45-1 Ramsey Road, Shirley, NY 11967, USA