

Recombinant Human GLTP Protein, Myc/DDK-tagged, C13 and N15-labeled

Cat. No. GLTP-1747H **Lot. No.** (See product label)

SPECIFICATION

| | |
|-------------------------|--|
| Product Overview | GLTP MS Standard C13 and N15-labeled recombinant protein (NP_057517) with a C-terminal MYC/DDK tag, was expressed in HEK293 cells. |
| Species | Human |
| Source | HEK293 |
| Description | The protein encoded by this gene is similar to bovine and porcine proteins which accelerate transfer of certain glycosphingolipids and glyceroglycolipids between membranes. It is thought to be a cytoplasmic protein. |
| Molecular Mass | 23.8 kDa |
| AA Sequence | MALLAEHLLKPLPADKQIETGPFLEAVSHLPPFFDCLGSPVFTPIKADISGNITKIKAVY DTNPAKFRTLQNILEVEKEMYGAEWPKVGATLALMWLKRGLRFIQVFLQSICDGERD ENHPNLIRVNATKAYEMALKKYHGWIWQKIFQAALYAAPYKSDFLKALSKGQNVTEE ECLEKIRLFLVNYTATIDVIYEMYTQMNAELNYKVTRTRPLEQKLISEEDLAANDILDY KDDDDKV |
| Purity | > 80% as determined by SDS-PAGE and Coomassie blue staining |
| Stability | Stable for 3 months from receipt of products under proper storage and handling conditions. |

 Tel: 1-631-559-9269 1-516-512-3133

 Email: info@creative-biomart.com  Fax: 1-631-938-8127

 45-1 Ramsey Road, Shirley, NY 11967, USA

| | |
|----------------|---|
| Storage | Store at -80 centigrade. Avoid repeated freeze-thaw cycles. |
|----------------|---|

| | |
|----------------------|-------------------------------|
| Concentration | 50 µg/mL as determined by BCA |
|----------------------|-------------------------------|

| | |
|-----------------------|---|
| Storage Buffer | 100 mM glycine, 25 mM Tris-HCl, pH 7.3. |
|-----------------------|---|

GENE INFORMATION

| | |
|------------------|---|
| Gene Name | GLTP glycolipid transfer protein [Homo sapiens (human)] |
|------------------|---|

| | |
|------------------------|------|
| Official Symbol | GLTP |
|------------------------|------|

| | |
|-----------------|--|
| Synonyms | GLTP; colipid transfer protein; glycolipid transfer protein; truncated glycolipid transfer protein |
|-----------------|--|

| | |
|----------------|-------|
| Gene ID | 51228 |
|----------------|-------|

| | |
|--------------------|-----------|
| mRNA Refseq | NM_016433 |
|--------------------|-----------|

| | |
|-----------------------|-----------|
| Protein Refseq | NP_057517 |
|-----------------------|-----------|

| | |
|------------|--------|
| MIM | 608949 |
|------------|--------|

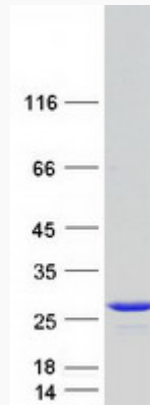
| | |
|-------------------|--------|
| UniProt ID | Q9NZD2 |
|-------------------|--------|

 Tel: 1-631-559-9269 1-516-512-3133

 Email: info@creative-biomart.com  Fax: 1-631-938-8127

 45-1 Ramsey Road, Shirley, NY 11967, USA

SDS-PAGE



 Tel: 1-631-559-9269 1-516-512-3133

 Email: info@creative-biomart.com  Fax: 1-631-938-8127

 45-1 Ramsey Road, Shirley, NY 11967, USA