

Recombinant Bovine GLTP Protein (2-209 aa), His-tagged

Cat. No. GLTP-2289B **Lot. No.** (See product label)

SPECIFICATION

Product Overview	Recombinant Bovine GLTP Protein (2-209 aa) is produced by Yeast expression system. This protein is fused with a 6xHis tag at the N-terminal. Research Area: Signal Transduction. Protein Description: Full Length of Mature Protein.
Species	Bovine
Source	Yeast
ProteinLength	2-209 aa
Description	Accelerates the intermembrane transfer of various glycolipids. Catalyzes the transfer of various glycosphingolipids between membranes but does not catalyze the transfer of phospholipids. May be involved in the intracellular translocation of glucosylceramides.
Form	Tris-based buffer,50% glycerol
Molecular Mass	25.8 kD
AA Sequence	ALLAEHLLRPLPADKQIETGPFLEAVSHLPPFFDCLGSPVFTPIKADISGNITKIKAVYD TNPTKFRTLQNILVEKEMYGAEWPKVGATLALMWLKRGLRFIQVFLQSICDGERDE NHPNLIRVNATKAYEMALKKYHGWIVQKIFQAALYAAPYKSDFLKALS KGGQNVTEEE CLEKVRLFLVNYTATIDVIYEMYTRMNAELNYKV
Purity	> 85% as determined by SDS-PAGE.

 Tel: 1-631-559-9269 1-516-512-3133

 Email: info@creative-biomart.com  Fax: 1-631-938-8127

 45-1 Ramsey Road, Shirley, NY 11967, USA

Notes	Repeated freezing and thawing is not recommended. Store working aliquots at 4 centigrade for up to one week.
Storage	The shelf life is related to many factors, storage state, buffer ingredients, storage temperature and the stability of the protein itself. Generally, the shelf life of liquid form is 6 months at -20 centigrade/-80 centigrade. The shelf life of lyophilized form is 12 months at -20 centigrade/-80 centigrade.
Concentration	A hardcopy of COA will be sent along with the products. Please refer to it for detailed information.

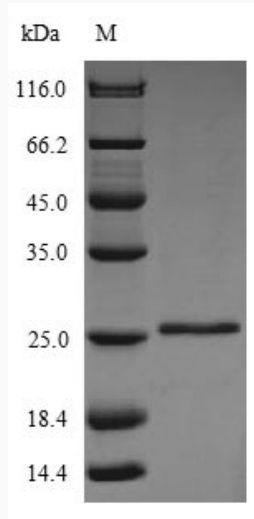
GENE INFORMATION

Gene Name	GLTP glycolipid transfer protein [<i>Bos taurus</i> (cattle)]
Official Symbol	GLTP
Synonyms	GLTP;
Gene ID	327678
mRNA Refseq	NM_175799
Protein Refseq	NP_786993
UniProt ID	P68265

 Tel: 1-631-559-9269 1-516-512-3133

 Email: info@creative-biomart.com  Fax: 1-631-938-8127

 45-1 Ramsey Road, Shirley, NY 11967, USA



(Tris-Glycine gel) Discontinuous SDS-PAGE (reduced) with 5% enrichment gel and 15% separation gel.

 Tel: 1-631-559-9269 1-516-512-3133

 Email: info@creative-biomart.com  Fax: 1-631-938-8127

 45-1 Ramsey Road, Shirley, NY 11967, USA