

## Recombinant Human GLTP Protein, GST-tagged

Cat. No. GLTP-4987H Lot. No. (See product label)

### SPECIFICATION

<b>Product Overview</b>	Human GLTP partial ORF ( NP_057517, 110 a.a. - 209 a.a.) recombinant protein with GST-tag at N-terminal.
<b>Species</b>	Human
<b>Source</b>	Wheat Germ
<b>Description</b>	The protein encoded by this gene is similar to bovine and porcine proteins which accelerate transfer of certain glycosphingolipids and glyceroglycolipids between membranes. It is thought to be a cytoplasmic protein. [provided by RefSeq
<b>Molecular Mass</b>	36.74 kDa
<b>AA Sequence</b>	SICDGERDENHPNLIRV NATKAYEMALKKYHGWIVQKIFQAALYAAPYKSDFLKALSK GQNVTEEECLEKIRLFLVNYTATIDVIYEMYTQMNAELNYKV
<b>Applications</b>	Enzyme-linked Immunoabsorbent Assay Western Blot (Recombinant protein) Antibody Production Protein Array
<b>Notes</b>	Best use within three months from the date of receipt of this protein.
<b>Storage</b>	Store at -80 centigrade. Aliquot to avoid repeated freezing and thawing.

 Tel: 1-631-559-9269 1-516-512-3133

 Email: [info@creative-biomart.com](mailto:info@creative-biomart.com)  Fax: 1-631-938-8127

 45-1 Ramsey Road, Shirley, NY 11967, USA

**Storage Buffer** 50 mM Tris-HCl, 10 mM reduced Glutathione, pH=8.0 in the elution buffer.

## GENE INFORMATION

**Gene Name** GLTP glycolipid transfer protein [ Homo sapiens ]

**Official Symbol** GLTP

**Synonyms** GLTP; colipid transfer protein; glycolipid transfer protein; truncated glycolipid transfer protein

**Gene ID** 51228

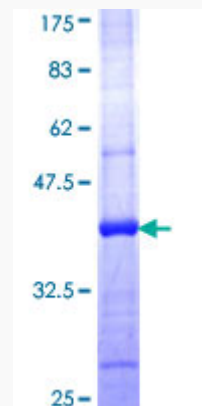
**mRNA Refseq** NM\_016433

**Protein Refseq** NP\_057517

**MIM** 608949

**UniProt ID** Q9NZD2

**Quality Control Testing**



 Tel: 1-631-559-9269 1-516-512-3133

 Email: [info@creative-biomart.com](mailto:info@creative-biomart.com)  Fax: 1-631-938-8127

 45-1 Ramsey Road, Shirley, NY 11967, USA



12.5% SDS-PAGE Stained with Coomassie Blue.

 Tel: 1-631-559-9269 1-516-512-3133

 Email: [info@creative-biomart.com](mailto:info@creative-biomart.com)  Fax: 1-631-938-8127

 45-1 Ramsey Road, Shirley, NY 11967, USA