

Recombinant Human GLUD2 Protein, Myc/DDK-tagged, C13 and N15-labeled

Cat. No. GLUD2-444H **Lot. No.** (See product label)

SPECIFICATION

Product Overview

GLUD2 MS Standard C13 and N15-labeled recombinant protein (NP_036216) with a C-terminal MYC/DDK tag, was expressed in HEK293 cells.

Species

Human

Source

HEK293

Description

The protein encoded by this gene is localized to the mitochondrion and acts as a homohexamer to recycle glutamate during neurotransmission. The encoded enzyme catalyzes the reversible oxidative deamination of glutamate to alpha-ketoglutarate. This gene is intronless.

Molecular Mass

61.4 kDa

AA Sequence

MYRYLAKALLPSRAGPAALGSAANHSAALLGRGRGQPAAASQPGLALAARRHYSEL
 VADREDDPNFFKMVEGFFDRGASIVEDKLVKDLRTQESEEQKRNRVRGILRIIKPCN
 HVLSLSFPIRRDDGSWEVIEGYRAQHSQHRTPCGGIRYSTDVSVDEVKALASLMTY
 KCAVVDVPPFGGAKAGVKINPKNYTENELEKITRRFTMELAKKGFIPGVDVPAPDMN
 TGEREMSWIADTYASTIGHYDINAHACVTGKPISQGGIHGRISATGRGVFHHGIENFIN
 EASYMSILGMTPGFRDKTFVVQGFNVGLHSMRYLHRFGAKCIAVGESDGSIWNPD
 GIDPKELEDFKLQHGHSILGFPAKPYEGSILEVDCDILIPAATEKQLTKSNAPRVKAKII
 AEGANGPTTPEADKIFLERNILVIPDLYLNAGGVTVSYFEWLKLNHNHVSYGRLTFKYE
 RDSNYHLLLSVQESLERKFGKHGGTIPIVPTAEFQDSISGASEKDIVHSALAYTMERS

 Tel: 1-631-559-9269 1-516-512-3133

 Email: info@creative-biomart.com  Fax: 1-631-938-8127

 45-1 Ramsey Road, Shirley, NY 11967, USA

ARQIMHTAMKYNLGLDLRТАAYVNAIEKVFKVYSEAGVTFTTRTRPLEQKLISEEDLA
ANDILDYKDDDDKV

Purity > 80% as determined by SDS-PAGE and Coomassie blue staining

Stability Stable for 3 months from receipt of products under proper storage and handling conditions.

Storage Store at -80 centigrade. Avoid repeated freeze-thaw cycles.

Concentration 50 µg/mL as determined by BCA

Storage Buffer 100 mM glycine, 25 mM Tris-HCl, pH 7.3.

GENE INFORMATION

Gene Name [GLUD2 glutamate dehydrogenase 2 \[Homo sapiens \(human\) \]](#)

Official Symbol [GLUD2](#)

Synonyms GLUD2; glutamate dehydrogenase 2; GLUDP1, glutamate dehydrogenase pseudogene 1; glutamate dehydrogenase 2, mitochondrial; GDH 2; glutamate dehydrogenase pseudogene 1; GDH2; GLUDP1

Gene ID [2747](#)

mRNA Refseq [NM_012084](#)

Protein Refseq [NP_036216](#)

MIM [300144](#)

 Tel: 1-631-559-9269 1-516-512-3133

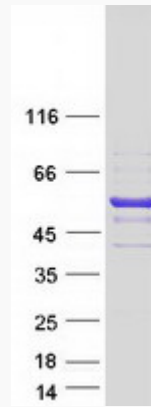
 Email: info@creative-biomart.com  Fax: 1-631-938-8127

 45-1 Ramsey Road, Shirley, NY 11967, USA

UniProt ID

P49448

SDS-PAGE



 Tel: 1-631-559-9269 1-516-512-3133

 Email: info@creative-biomart.com  Fax: 1-631-938-8127

 45-1 Ramsey Road, Shirley, NY 11967, USA