

Recombinant Full Length Human GLUL Protein, C-Flag-tagged

Cat. No. GLUL-2147HFL Lot. No. (See product label)

SPECIFICATION

Product Overview	Recombinant Full Length Human GLUL Protein, fused to Flag-tag at C-terminus, was expressed in Mammalian cells.
Species	Human
Source	Mammalian Cells
Description	The protein encoded by this gene belongs to the glutamine synthetase family. It catalyzes the synthesis of glutamine from glutamate and ammonia in an ATP-dependent reaction. This protein plays a role in ammonia and glutamate detoxification, acid-base homeostasis, cell signaling, and cell proliferation. Glutamine is an abundant amino acid, and is important to the biosynthesis of several amino acids, pyrimidines, and purines. Mutations in this gene are associated with congenital glutamine deficiency, and overexpression of this gene was observed in some primary liver cancer samples. There are six pseudogenes of this gene found on chromosomes 2, 5, 9, 11, and 12. Alternative splicing results in multiple transcript variants.
Form	25 mM Tris HCl, pH 7.3, 100 mM glycine, 10% glycerol.
Molecular Mass	41.9 kDa
AA Sequence	MTTSASSHLNKGIKQVYMSLPQGEKVQAMYIWIDGTGEGLRCKTRTLTLDSEPKCVEE LPEWNFDGSSSTLQS EGSNSDMYLVPAAMFRDPFRKDPNKLVLCEVFKYNRRPAET NLRHTCKRIMDMVSNQHPWFGMEQEYTLM GTDGHPFGWPSNGFPGPQGPYYCG VGADRAYGRDIVEAHYRACLYAGVKIAGTNAEVMPAQWEFQIGPCE GISMGDHLW

 Tel: 1-631-559-9269 1-516-512-3133

 Email: info@creative-biomart.com  Fax: 1-631-938-8127

 45-1 Ramsey Road, Shirley, NY 11967, USA

VARFILHRVCEDFGVIATFDPKPIPGNWNGAGCHTNFSTKAMREENGLKYIEEAIEKL
 SKR HQYHIRAYDPKGGGLDNARRLTGFHETSNINDFSAGVANRSASIRIPRTVGGQEKK
 GYFEDRRPSANCDPFS VTEALIRTCLLNETGDEPFQYKN TRTRPLEQKLISEEDLAA
 NDILDYKDDDDKV

Purity > 80% as determined by SDS-PAGE and Coomassie blue staining.

Stability Stable for 12 months from the date of receipt of the product under proper storage and handling conditions. Avoid repeated freeze-thaw cycles.

Storage Store at -80 centigrade.

Concentration >50 ug/mL as determined by microplate BCA method.

Preparation Recombinant protein was captured through anti-DDK affinity column followed by conventional chromatography steps.

Protein Pathways Alanine, aspartate and glutamate metabolism, Arginine and proline metabolism, Metabolic pathways, Nitrogen metabolism

Full Length Full L.

GENE INFORMATION

Gene Name [GLUL glutamate-ammonia ligase \[Homo sapiens \(human\) \]](#)

Official Symbol [GLUL](#)

Synonyms GS; GLNS; PIG43; PIG59

Gene ID [2752](#)

 Tel: 1-631-559-9269 1-516-512-3133

 Email: info@creative-biomart.com  Fax: 1-631-938-8127

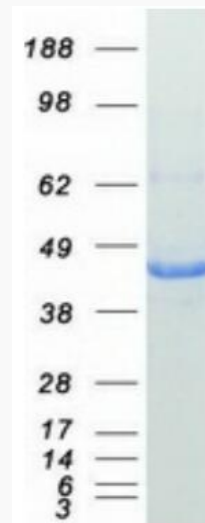
 45-1 Ramsey Road, Shirley, NY 11967, USA

mRNA Refseq [NM_002065.7](#)

Protein Refseq [NP_002056.2](#)

MIM [138290](#)

UniProt ID [P15104](#)



Coomassie blue staining of purified GLUL protein.

 Tel: 1-631-559-9269 1-516-512-3133

 Email: info@creative-biomart.com  Fax: 1-631-938-8127

 45-1 Ramsey Road, Shirley, NY 11967, USA