

## Recombinant Human GLYATL1 Protein, GST-tagged

**Cat. No.** GLYATL1-4997H    **Lot. No.** (See product label)

### SPECIFICATION

<b>Product Overview</b>	Human GLYATL1 full-length ORF ( NP_542392.2, 1 a.a. - 333 a.a.) recombinant protein with GST-tag at N-terminal.
<b>Species</b>	Human
<b>Source</b>	Wheat Germ
<b>Description</b>	GLYATL1 (Glycine-N-Acyltransferase Like 1) is a Protein Coding gene. Among its related pathways are Conjugation of carboxylic acids and Cytochrome P450 - arranged by substrate type. GO annotations related to this gene include glycine N-acyltransferase activity and glutamine N-acyltransferase activity. An important paralog of this gene is GLYATL1P3.
<b>Molecular Mass</b>	65 kDa
<b>AA Sequence</b>	MFKLCSNKMVSQEGSEVELLVSPGARSEHGRYLQDPIVSIIDLSEWLRRIIEFLLQGLKV YGSVYHINHGNPFNMEVLVDSWPEYQMVIIRPQKQEMTDDMDSYTNVYRMFSKEP QKSEEVLNKCEIVNWKQRLQIQGLQESLGEGIRVATFSKSVKVEHSRALLLVTEDILK LNASSKSKLGSWAETGHPDDEFESETPNFKYAQLDVSYSGLVNDNWKRGKNERSL HYIKRCIEDLPAACMLGPEGVPVSWVTMDPSCEVGMAYSMEKYRRTGNMARVMVR YMKYLRQKNIPFYISVLEENEDSRRFVGQFGFFEASCEWHQWTCYPQNLVVPF
<b>Applications</b>	Enzyme-linked Immunoabsorbent Assay Western Blot (Recombinant protein) Antibody Production

 Tel: 1-631-559-9269    1-516-512-3133

 Email: [info@creative-biomart.com](mailto:info@creative-biomart.com)     Fax: 1-631-938-8127

 45-1 Ramsey Road, Shirley, NY 11967, USA

**Protein Array**

<b>Notes</b>	Best use within three months from the date of receipt of this protein.
<b>Storage</b>	Store at -80 centigrade. Aliquot to avoid repeated freezing and thawing.
<b>Storage Buffer</b>	50 mM Tris-HCl, 10 mM reduced Glutathione, pH=8.0 in the elution buffer.

**GENE INFORMATION**

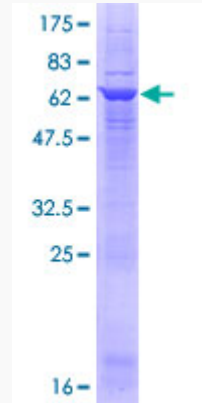
<b>Gene Name</b>	GLYATL1 glycine-N-acyltransferase-like 1 [ Homo sapiens ]
<b>Official Symbol</b>	GLYATL1
<b>Synonyms</b>	GLYATL1; glycine-N-acyltransferase-like 1; glycine N-acyltransferase-like protein 1; FLJ34646; MGC15397; acyl-CoA:glycine N-acyltransferase-like protein 1; GNAT; GATF-C; FLJ26507; MGC15937;
<b>Gene ID</b>	92292
<b>mRNA Refseq</b>	NM_001220494
<b>Protein Refseq</b>	NP_001207423
<b>MIM</b>	614761
<b>UniProt ID</b>	Q969I3

 Tel: 1-631-559-9269 1-516-512-3133

 Email: [info@creative-biomart.com](mailto:info@creative-biomart.com)  Fax: 1-631-938-8127

 45-1 Ramsey Road, Shirley, NY 11967, USA

**Quality Control  
Testing**



12.5% SDS-PAGE Stained with Coomassie Blue.

 Tel: 1-631-559-9269 1-516-512-3133

 Email: [info@creative-biomart.com](mailto:info@creative-biomart.com)  Fax: 1-631-938-8127

 45-1 Ramsey Road, Shirley, NY 11967, USA