

Recombinant Human GLYATL2 Protein, GST-tagged

Cat. No. GLYATL2-4998H **Lot. No.** (See product label)

SPECIFICATION

Product Overview	Human GLYATL2 full-length ORF (AAH16789.1, 1 a.a. - 294 a.a.) recombinant protein with GST-tag at N-terminal.
Species	Human
Source	Wheat Germ
Description	GLYATL2 (Glycine-N-Acyltransferase Like 2) is a Protein Coding gene. Among its related pathways are Conjugation of carboxylic acids and Cytochrome P450 - arranged by substrate type. GO annotations related to this gene include transferase activity, transferring acyl groups other than amino-acyl groups and glycine N-acyltransferase activity. An important paralog of this gene is GLYATL1P3.
Molecular Mass	60.7 kDa
AA Sequence	MLVLHNSQKLQILYKSLEKSIPESIKVYGAIFNIKDKNPFNMEVLVDAWPDYQIVITRP QKQEMKDDQDHYTNTYHIFTKASDKLEEVLSSVSNVISWEQTLQIQGCQEGLEAIRK VATSKSVQVDYMKTILFIPELPPKKHKTSSNDKMELFVDDDNKKGNFSNMFIDASHA GLVNEHWAFGKNERSLKYIERCLQDFLGFGVLGPEGQLVSWIVMEQSCELRMGYT VPKYRHQGNMLQIGYHLEKYLKQKEIPFYFHVADNNEKSLQALNNLGFKICPCGWH QWKCTPKKYC
Applications	Enzyme-linked Immunoabsorbent Assay Western Blot (Recombinant protein) Antibody Production

 Tel: 1-631-559-9269 1-516-512-3133

 Email: info@creative-biomart.com  Fax: 1-631-938-8127

 45-1 Ramsey Road, Shirley, NY 11967, USA

Protein Array

Notes	Best use within three months from the date of receipt of this protein.
Storage	Store at -80 centigrade. Aliquot to avoid repeated freezing and thawing.
Storage Buffer	50 mM Tris-HCl, 10 mM reduced Glutathione, pH=8.0 in the elution buffer.

GENE INFORMATION

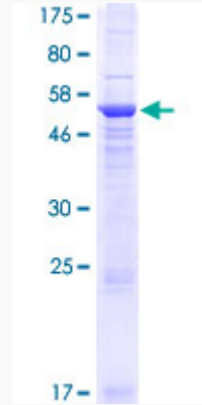
Gene Name	GLYATL2 glycine-N-acyltransferase-like 2 [Homo sapiens]
Official Symbol	GLYATL2
Synonyms	GLYATL2; glycine-N-acyltransferase-like 2; glycine N-acyltransferase-like protein 2; BXMAS2 10; MGC24009; glycine acyltransferase family-B; acyl-CoA:glycine N-acyltransferase-like protein 2; GATF-B; BXMAS2-10;
Gene ID	219970
mRNA Refseq	NM_145016
Protein Refseq	NP_659453
MIM	614762
UniProt ID	Q8WU03

 Tel: 1-631-559-9269 1-516-512-3133

 Email: info@creative-biomart.com  Fax: 1-631-938-8127

 45-1 Ramsey Road, Shirley, NY 11967, USA

**Quality Control
Testing**



12.5% SDS-PAGE Stained with Coomassie Blue.

 Tel: 1-631-559-9269 1-516-512-3133

 Email: info@creative-biomart.com  Fax: 1-631-938-8127

 45-1 Ramsey Road, Shirley, NY 11967, USA