

Recombinant Equine GM-CSF

Cat. No. GM-CSF-368E Lot. No. (See product label)

SPECIFICATION

Product Overview	Recombinant Equine GM-CSF was expressed in Yeast. MW= 15.2 kDa (135 aa).
Species	Equine
Source	Yeast
Description	GMCSF is a cytokine that controls the production, differentiation, and function of granulocytes and macrophages. The active form of the protein is found extracellularly as a homodimer. This gene has been localized to a cluster of related genes at chromosome region 5q31, which is known to be associated with interstitial deletions in the 5q- syndrome and acute myelogenous leukemia. Other genes in the cluster include those encoding interleukins 4, 5, and 13. GM-CSF stimulates the growth and differentiation of hematopoietic precursor cells from various lineages, including granulocytes, macrophages, eosinophils and erythrocytes.
Formulation/ Reconstitution	Lyophilized. Reconstitute with sterile phosphate-buffered saline containing at least 0.1% carrier protein.
Purification	Ion-exchange chromatography.
Purity	>95% as visualized by SDS-PAGE analysis.
Amino Acid Sequence	APTRQPSPVT RPWQHVDIAK EALSLLNNS DTAAIMNETV EVVSETFDAE ELTCLQTRLK LYKQGLRGSL IKLEGPLTMM ASHYKQHCPP TLETSCATQM ITFKSFKNL KDFLFEIPFD CWSQPRSKAG LPARS.

 Tel: 1-631-559-9269 1-516-512-3133

 Email: info@creative-biomart.com  Fax: 1-631-938-8127

 45-1 Ramsey Road, Shirley, NY 11967, USA

Bioactivity

In testing.

Stability And Storage

Stable for up to twelve months from date of receipt at -20°C. Stable for at least 3 months when stored in working aliquots with a carrier protein at -20°C. Avoid repeated freeze/thaw cycles.

GENE INFORMATION

Gene Name

GM-CSF granulocyte-macrophage colony-stimulating-factor [*Equus caballus*]

Synonyms

granulocyte-macrophage colony-stimulating-factor; GM-CSF; granulocyte-macrophage colony-stimulating factor

Gene ID

100033981

mRNA Refseq

NM_001081882.1

Protein Refseq

NP_001075351.1

Chromosome Location

14

Pathway

Cytokine-cytokine receptor interaction; Fc epsilon RI signaling pathway; Hematopoietic cell lineage; Jak-STAT signaling pathway; Natural killer cell mediated cytotoxicity; T cell receptor signaling pathway

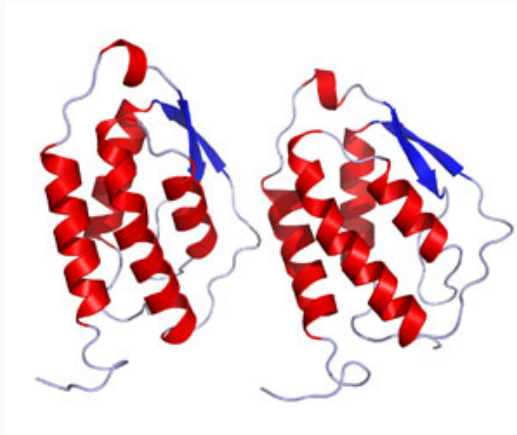
 Tel: 1-631-559-9269 1-516-512-3133

 Email: info@creative-biomart.com  Fax: 1-631-938-8127

 45-1 Ramsey Road, Shirley, NY 11967, USA



PDB rendering based
on 2gmf.



Tel: 1-631-559-9269 1-516-512-3133

Email: info@creative-biomart.com Fax: 1-631-938-8127

45-1 Ramsey Road, Shirley, NY 11967, USA