

## Recombinant Human GM2A Protein (Ser32-Ile193), C-His tagged

Cat. No. GM2A-2400H Lot. No. (See product label)

### SPECIFICATION

<b>Product Overview</b>	Recombinant human GM2A (Ser32-Ile193) protein fused with the C-terminal His tag was expressed in Mammalian cells.
<b>Species</b>	Human
<b>Source</b>	Mammalian Cells
<b>ProteinLength</b>	Ser32-Ile193
<b>Molecular Mass</b>	17.82 kDa
<b>Purity</b>	>90 % as determined by SDS-PAGE.
<b>Notes</b>	For research use only.
<b>Storage</b>	Use a manual defrost freezer and avoid repeated freeze thaw cycles. Store at 2 to 8 centigrade for one week. Store at -20 to -80 centigrade for twelve months from the date of receipt.
<b>Storage Buffer</b>	Supplied as solution form in PBS or lyophilized from PBS.
<b>Reconstitution</b>	Reconstitute in sterile water for a stock solution.
<b>Shipping</b>	In general, proteins are provided as lyophilized powder/frozen liquid. They are

 Tel: 1-631-559-9269 1-516-512-3133

 Email: [info@creative-biomart.com](mailto:info@creative-biomart.com)  Fax: 1-631-938-8127

 45-1 Ramsey Road, Shirley, NY 11967, USA



shipped out with dry ice/blue ice unless customers require otherwise.

## GENE INFORMATION

**Gene Name** GM2A GM2 ganglioside activator [ Homo sapiens (human) ]

**Official Symbol** GM2A

**Synonyms** GM2A; GM2 ganglioside activator; GM2 ganglioside activator protein; ganglioside GM2 activator; cerebroside sulfate activator protein; SAP 3; sphingolipid activator protein 3; shingolipid activator protein 3; SAP-3; GM2-AP;

**Gene ID** 2760

**mRNA Refseq** NM\_000405

**Protein Refseq** NP\_000396

**MIM** 613109

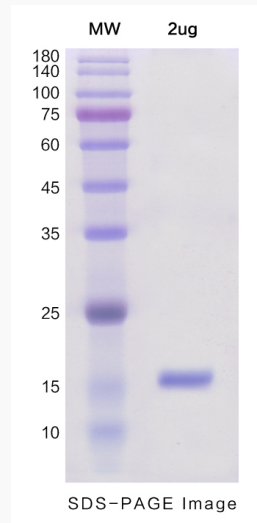
**UniProt ID** P17900

 Tel: 1-631-559-9269 1-516-512-3133

 Email: [info@creative-biomart.com](mailto:info@creative-biomart.com)  Fax: 1-631-938-8127

 45-1 Ramsey Road, Shirley, NY 11967, USA

**SDS-PAGE**



 Tel: 1-631-559-9269 1-516-512-3133

 Email: [info@creative-biomart.com](mailto:info@creative-biomart.com)  Fax: 1-631-938-8127

 45-1 Ramsey Road, Shirley, NY 11967, USA