

Recombinant Human GM2A Protein, GST-tagged

Cat. No. GM2A-5001H Lot. No. (See product label)

SPECIFICATION

Product Overview	Human GM2A full-length ORF (NP_000396.2, 1 a.a. - 193 a.a.) recombinant protein with GST-tag at N-terminal.
Species	Human
Source	Wheat Germ
Description	This gene encodes a small glycolipid transport protein which acts as a substrate specific co-factor for the lysosomal enzyme beta-hexosaminidase A. Beta-hexosaminidase A, together with GM2 ganglioside activator, catalyzes the degradation of the ganglioside GM2, and other molecules containing terminal N-acetyl hexosamines. Mutations in this gene result in GM2-gangliosidosis type AB or the AB variant of Tay-Sachs disease. [provided by RefSeq]
Molecular Mass	47.2 kDa
AA Sequence	MQSLMQAPLLIALGLLLAAPAQAHLKKPSQLSSFSWDNCDEGKDPVIRSLTLEPDPI IVPGNVTL SVMGSTS VPLSSPLKVDLVLEKEVAGLWIKIPCTDYIGSCTFEHFCDVLD MLIPTGEPCEPLR TYGLPCHCPFKEGTYS LPKSEFVVPDLELPSWLTTGNYRIESVL SSSGKRLGCIKIAASLKGI
Applications	Enzyme-linked Immunoabsorbent Assay Western Blot (Recombinant protein) Antibody Production Protein Array

 Tel: 1-631-559-9269 1-516-512-3133

 Email: info@creative-biomart.com  Fax: 1-631-938-8127

 45-1 Ramsey Road, Shirley, NY 11967, USA

Notes	Best use within three months from the date of receipt of this protein.
Storage	Store at -80 centigrade. Aliquot to avoid repeated freezing and thawing.
Storage Buffer	50 mM Tris-HCl, 10 mM reduced Glutathione, pH=8.0 in the elution buffer.

GENE INFORMATION

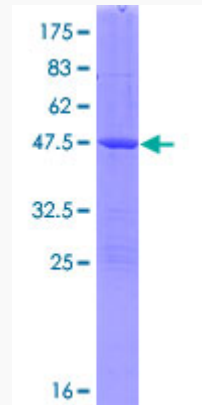
Gene Name	GM2A GM2 ganglioside activator [Homo sapiens]
Official Symbol	GM2A
Synonyms	GM2A; GM2 ganglioside activator; GM2 ganglioside activator protein; ganglioside GM2 activator; cerebroside sulfate activator protein; SAP 3; sphingolipid activator protein 3; shingolipid activator protein 3; SAP-3; GM2-AP;
Gene ID	2760
mRNA Refseq	NM_000405
Protein Refseq	NP_000396
MIM	613109
UniProt ID	P17900

 Tel: 1-631-559-9269 1-516-512-3133

 Email: info@creative-biomart.com  Fax: 1-631-938-8127

 45-1 Ramsey Road, Shirley, NY 11967, USA

**Quality Control
Testing**



12.5% SDS-PAGE Stained with Coomassie Blue.

 Tel: 1-631-559-9269 1-516-512-3133

 Email: info@creative-biomart.com  Fax: 1-631-938-8127

 45-1 Ramsey Road, Shirley, NY 11967, USA