

## Recombinant Human GMCL1 Protein, GST-tagged

Cat. No. GMCL1-5003H Lot. No. (See product label)

### SPECIFICATION

<b>Product Overview</b>	Human GMCL1 full-length ORF ( NP_848526.1, 1 a.a. - 515 a.a.) recombinant protein with GST-tag at N-terminal.
<b>Species</b>	Human
<b>Source</b>	Wheat Germ
<b>Description</b>	This gene encodes a nuclear envelope protein that appears to be involved in spermatogenesis, either directly or by influencing genes that play a more direct role in the process. This multi-exon locus is the homolog of the mouse and drosophila germ cell-less gene but the human genome also contains a single-exon locus on chromosome 5 that contains an open reading frame capable of encoding a highly-related protein. [provided by RefSeq]
<b>Molecular Mass</b>	85.1 kDa
<b>AA Sequence</b>	<p>MGSLSSRVLRQPRPALAQQAQGARAGGSARRPDTGDDAAGHGFCYCAGSHKRKR  SSGSFCYCHPDSETDEDEEEEGDEQQRLNTPRRKCLKSTSKYIYQTLFLNGENSDIK  ICALGEEWSLHKIYLCQSGYFSSMFSGSWKESSMNIIELEIPDQNIQVEALQVAFGSL  YRDDVLIKPSRVVAILAAACLLQLDGLIQQCGETMKETVNVKTVCGYYTSAGTYGLD  SVKKKCLEWLLNNLMTHQNVELFKELSINVMKQLIGSSNLFVMQVEMDIYTALKKWM  FLQLVPSWNGSLKQLLTETDVWFSKQRKDFEGMAFLETEQGKPFVSVFRHLRLQYII  SDLASARIIEQDAVVPSEWLSSVYKQQWFAMLRAEQDSEVGPQEINKEELEGNSMR  CGRKLAKDGEYCWRWTGFNFGFDLLVITYTNRYYIIFKRNTLNQPCSGSVSLQPRRSIA</p>

 Tel: 1-631-559-9269 1-516-512-3133

 Email: [info@creative-biomart.com](mailto:info@creative-biomart.com)  Fax: 1-631-938-8127

 45-1 Ramsey Road, Shirley, NY 11967, USA

	FRLRLASFDSSGKLCISRTTGYQILTLEKDQEQVVMNLDSRLLIFPLYICCNFLYISPEK KN
<b>Applications</b>	Enzyme-linked Immunoabsorbent Assay Western Blot (Recombinant protein) Antibody Production Protein Array
<b>Notes</b>	Best use within three months from the date of receipt of this protein.
<b>Storage</b>	Store at -80 centigrade. Aliquot to avoid repeated freezing and thawing.
<b>Storage Buffer</b>	50 mM Tris-HCl, 10 mM reduced Glutathione, pH=8.0 in the elution buffer.

## GENE INFORMATION

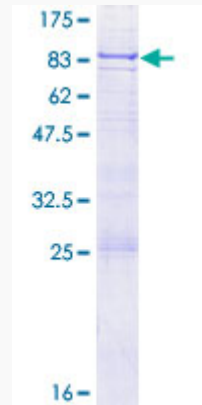
<b>Gene Name</b>	GMCL1 germ cell-less, spermatogenesis associated 1 [ Homo sapiens ]
<b>Official Symbol</b>	GMCL1
<b>Synonyms</b>	GCL; GCL1; BTBD13; GMCL1; germ cell-less, spermatogenesis associated 1
<b>Gene ID</b>	64395
<b>mRNA Refseq</b>	NM_178439
<b>Protein Refseq</b>	NP_848526
<b>UniProt ID</b>	Q96IK5

 Tel: 1-631-559-9269 1-516-512-3133

 Email: [info@creative-biomart.com](mailto:info@creative-biomart.com)  Fax: 1-631-938-8127

 45-1 Ramsey Road, Shirley, NY 11967, USA

**Quality Control  
Testing**



12.5% SDS-PAGE Stained with Coomassie Blue.

 Tel: 1-631-559-9269 1-516-512-3133

 Email: [info@creative-biomart.com](mailto:info@creative-biomart.com)  Fax: 1-631-938-8127

 45-1 Ramsey Road, Shirley, NY 11967, USA