

# Recombinant Human GMDS Protein, Myc/DDK-tagged, C13 and N15-labeled

Cat. No. GMDS-4250H Lot. No. (See product label)

## SPECIFICATION

<b>Product Overview</b>	GMDS MS Standard C13 and N15-labeled recombinant protein (NP_001491) with a C-terminal MYC/DDK tag, was expressed in HEK293 cells.
<b>Species</b>	Human
<b>Source</b>	HEK293
<b>Description</b>	GDP-mannose 4,6-dehydratase (GMD; EC 4.2.1.47) catalyzes the conversion of GDP-mannose to GDP-4-keto-6-deoxymannose, the first step in the synthesis of GDP-fucose from GDP-mannose, using NADP <sup>+</sup> as a cofactor. The second and third steps of the pathway are catalyzed by a single enzyme, GDP-keto-6-deoxymannose 3,5-epimerase, 4-reductase, designated FX in humans.
<b>Molecular Mass</b>	41.9 kDa
<b>AA Sequence</b>	MAHAPARCPSARGSGDGEMGKPRNVALITGITGQDGSYLAEFLEKGYEVHGIVRR SSSFNTGRIEHLKYKNPQAHIEGNMKLHYGDLTDSTCLVKIINEVKPTEIYNLGAQSHV KISFDLAEYTADV DGVGTLRLLDAVKTCGLINSVKFYQASTSELYGKVQEIPQKETTP FYPRSPYGAALKLYAYWIVVNFREAYNLFAVNGILFNHESPRRGANFVTRKISRVAKI YLGQLECFSLGNLDAKRDWGHAKDYVEAMWLMLQNDEPEDFVIATGEVHSVREFV EKSFLHIGKTIVWEGKNENEVGRCKETGKVHVTVDLKYYRPTEVDFLQGDCTKAKQ KLNWKPRVAFDELVREMVDVHADMVLMRTNPNATRTRPLEQKLISEEDLAANDILDYKD DDDKV

 Tel: 1-631-559-9269 1-516-512-3133

 Email: [info@creative-biomart.com](mailto:info@creative-biomart.com)  Fax: 1-631-938-8127

 45-1 Ramsey Road, Shirley, NY 11967, USA

<b>Purity</b>	> 80% as determined by SDS-PAGE and Coomassie blue staining
<b>Stability</b>	Stable for 3 months from receipt of products under proper storage and handling conditions.
<b>Storage</b>	Store at -80 centigrade. Avoid repeated freeze-thaw cycles.
<b>Concentration</b>	50 µg/mL as determined by BCA
<b>Storage Buffer</b>	100 mM glycine, 25 mM Tris-HCl, pH 7.3.

## GENE INFORMATION

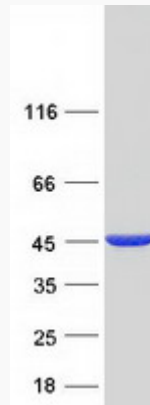
<b>Gene Name</b>	GMDS GDP-mannose 4,6-dehydratase [ Homo sapiens (human) ]
<b>Official Symbol</b>	GMDS
<b>Synonyms</b>	GMDS; GDP-mannose 4,6-dehydratase; GDP-mannose 4,6 dehydratase; GMD; SDR3E1; short chain dehydrogenase/reductase family 3E; member 1; GDP-D-mannose dehydratase; short chain dehydrogenase/reductase family 3E, member 1;
<b>Gene ID</b>	2762
<b>mRNA Refseq</b>	NM_001500
<b>Protein Refseq</b>	NP_001491
<b>MIM</b>	602884
<b>UniProt ID</b>	O60547

 Tel: 1-631-559-9269 1-516-512-3133

 Email: [info@creative-biomart.com](mailto:info@creative-biomart.com)  Fax: 1-631-938-8127

 45-1 Ramsey Road, Shirley, NY 11967, USA

**SDS-PAGE**



 Tel: 1-631-559-9269 1-516-512-3133

 Email: [info@creative-biomart.com](mailto:info@creative-biomart.com)  Fax: 1-631-938-8127

 45-1 Ramsey Road, Shirley, NY 11967, USA